

Legend

Erosion Monitoring Site

- Actively Monitored
- No Longer Monitored

Roads

Railroad

Erosion Rate

- Not Eroding
- Slow Rate
- Moderate Rate
- High Rate

Public Land Manager

- BLM
- COE
- USFS
- USFWS
- Town/City
- County
- State
- PUD Lands
- Kalispel Trust Lands

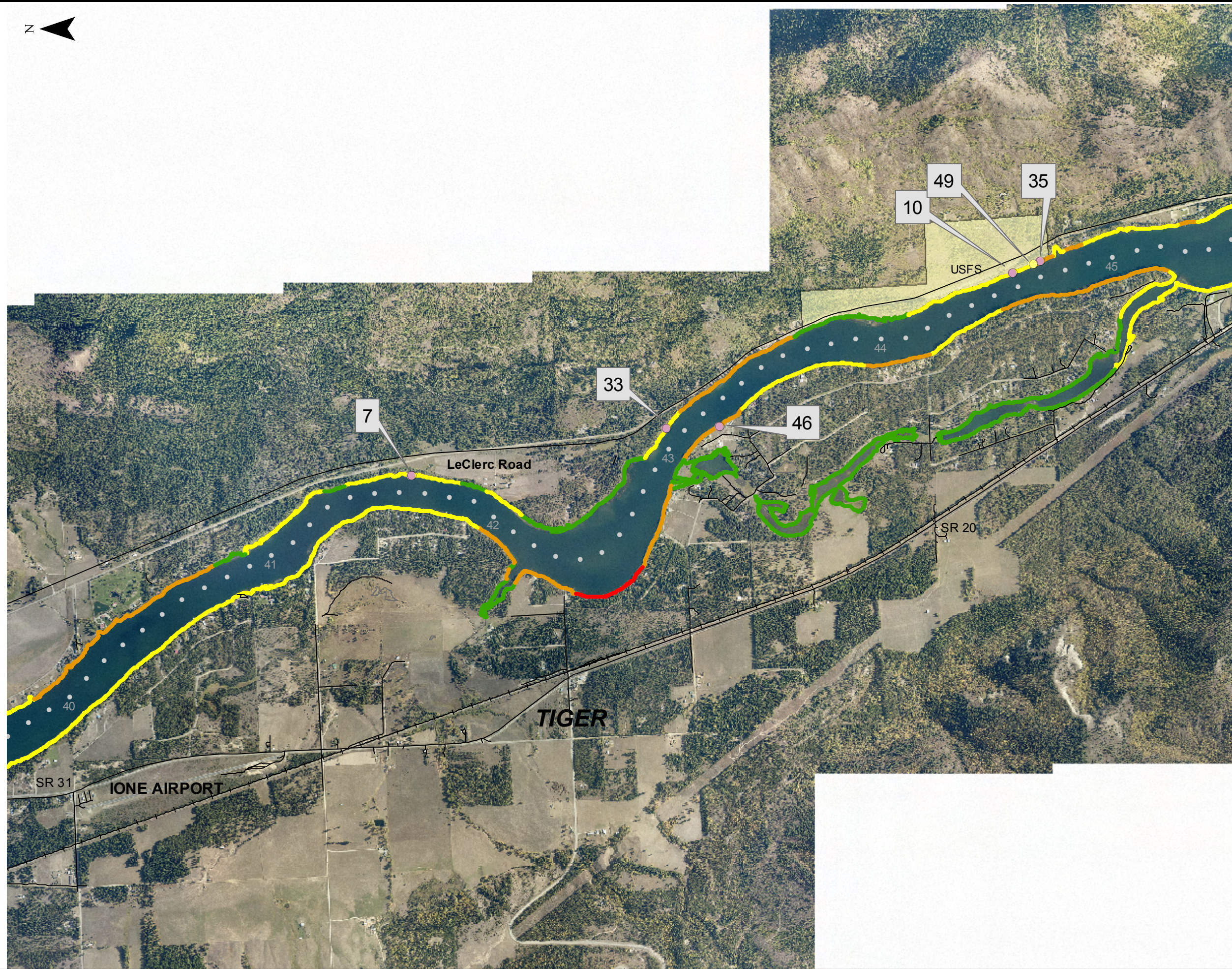
0 1,000 2,000 4,000 Feet

1 inch equals 2,000 feet

Updated January 2018

Erosion Rate Maps
Box Canyon Hydroelectric Project
Sheet 1 of 11





Legend

Erosion Monitoring Site

- Actively Monitored
- No Longer Monitored

Roads

Railroad

Erosion Rate

- Not Eroding
- Slow Rate
- Moderate Rate
- High Rate

Public Land Manager

- BLM
- COE
- USFS
- USFWS
- Town/City
- County
- State
- PUD Lands
- Kalispel Trust Lands

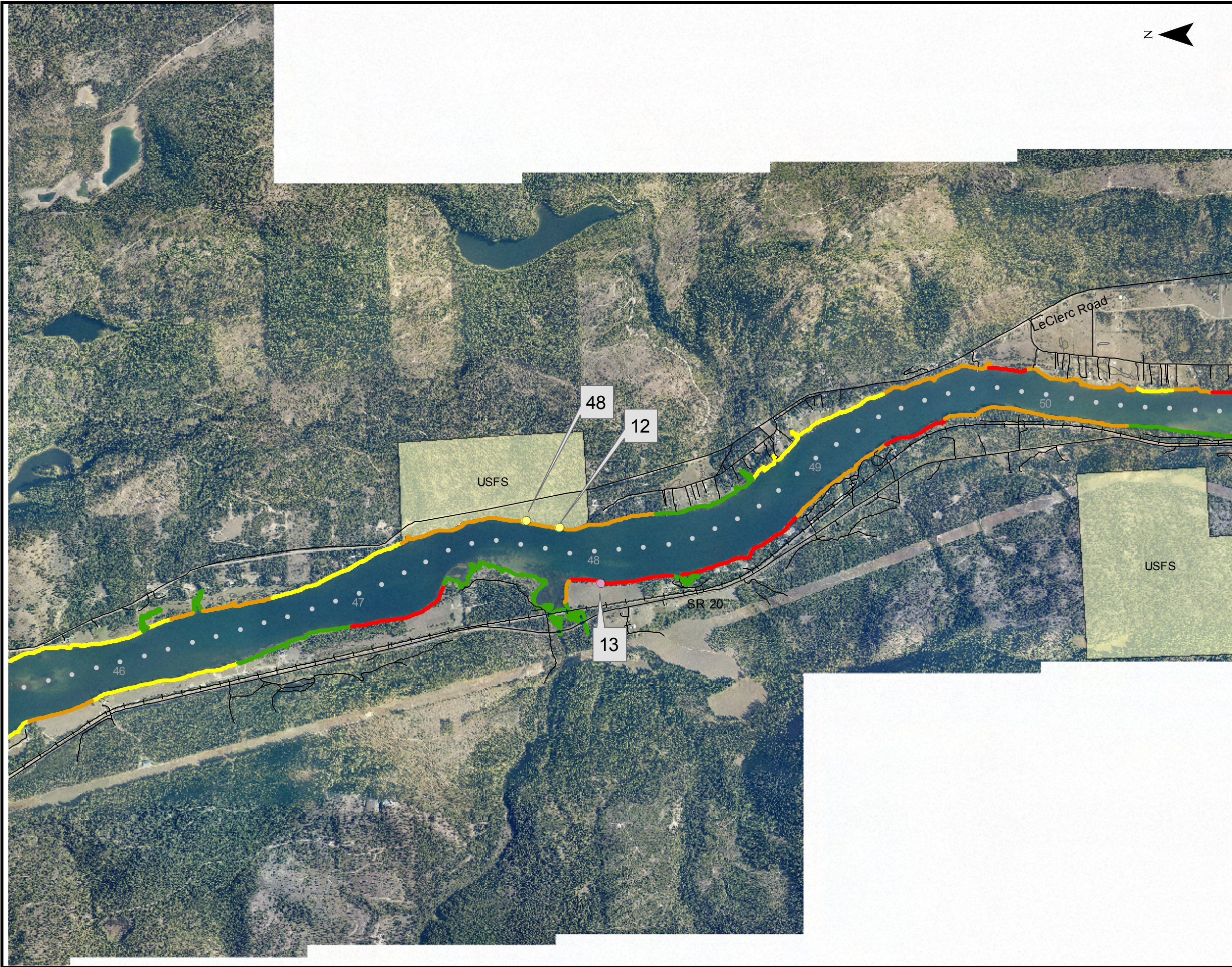
0 1,000 2,000 4,000 Feet

1 inch equals 2,000 feet

Updated January 2018

Erosion Rate Maps
Box Canyon Hydroelectric Project
Sheet 2 of 11





Legend

Erosion Monitoring Site

- Actively Monitored
- No Longer Monitored

- Roads
- Railroad

Erosion Rate

- Not Eroding
- Slow Rate
- Moderate Rate
- High Rate

Public Land Manager

- BLM
- COE
- USFS
- USFWS
- Town/City
- County
- State
- PUD Lands
- Kalispel Trust Lands

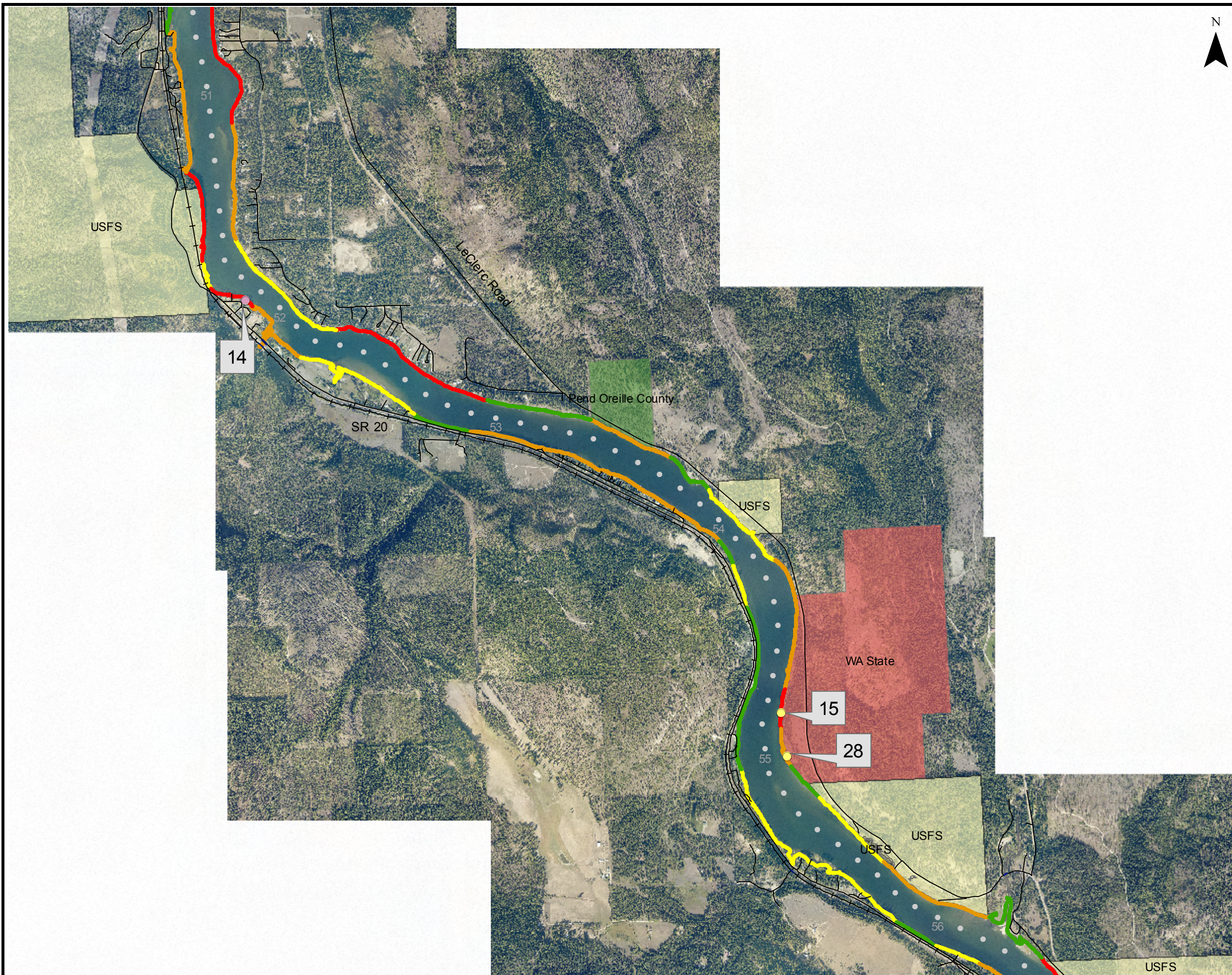
0 1,000 2,000 4,000 Feet

1 inch equals 2,000 feet

Updated January 2018

Erosion Rate Maps
Box Canyon Hydroelectric Project
Sheet 3 of 11





Legend

Erosion Monitoring Site

- Actively Monitored
- No Longer Monitored

Erosion Rate

- Not Eroding
- Slow Rate
- Moderate Rate
- High Rate

Public Land Manager

- BLM
- COE
- USFS
- USFWS
- Town/City
- County
- State
- PUD Lands
- Kalispel Trust Lands

01,0002,0004,000 Feet

1 inch equals 2,000 feet

Updated January 2018

Erosion Rate Maps

Box Canyon Hydroelectric Project

Sheet 4 of 11



Legend

Erosion Monitoring Site

- Actively Monitored
- No Longer Monitored

— Roads

—+— Railroad

Erosion Rate

- Not Eroding
- Slow Rate
- Moderate Rate
- High Rate

Public Land Manager

- BLM
- COE
- USFS
- USFWS
- Town/City
- County
- State
- PUD Lands
- Kalispel Trust Lands

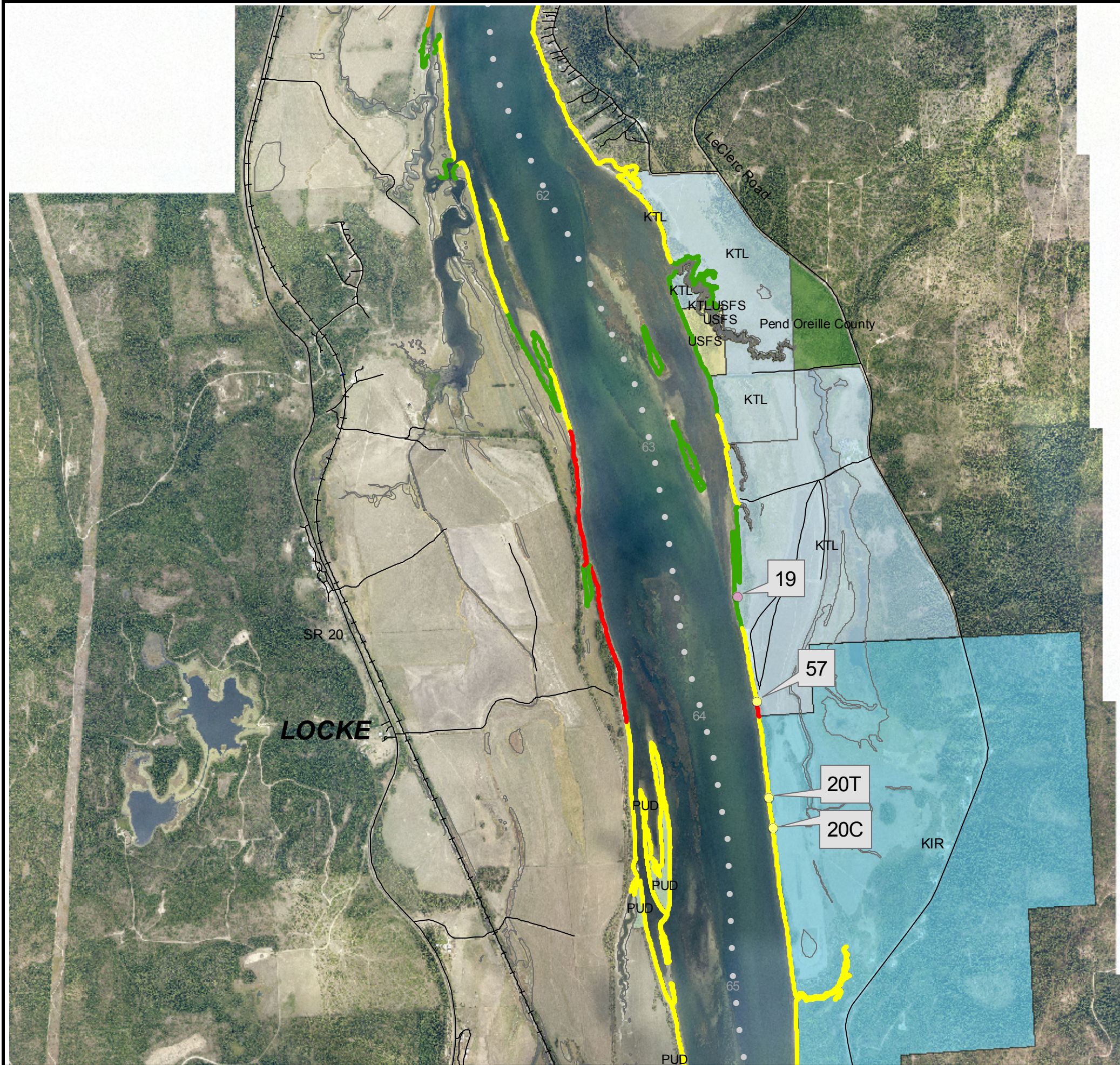
0 1,000 2,000 4,000 Feet

1 inch equals 2,000 feet

Updated January 2018

Erosion Rate Maps
Box Canyon Hydroelectric Project
Sheet 5 of 11





Legend

Erosion Monitoring Site

- Actively Monitored
- No Longer Monitored

- Roads
- Railroad

Erosion Rate

- Not Eroding
- Slow Rate
- Moderate Rate
- High Rate

Public Land Manager

- BLM
- COE
- USFS
- USFWS
- Town/City
- County
- State
- PUD Lands
- Kalispel Trust Lands
- Kalispel Indian Reservation

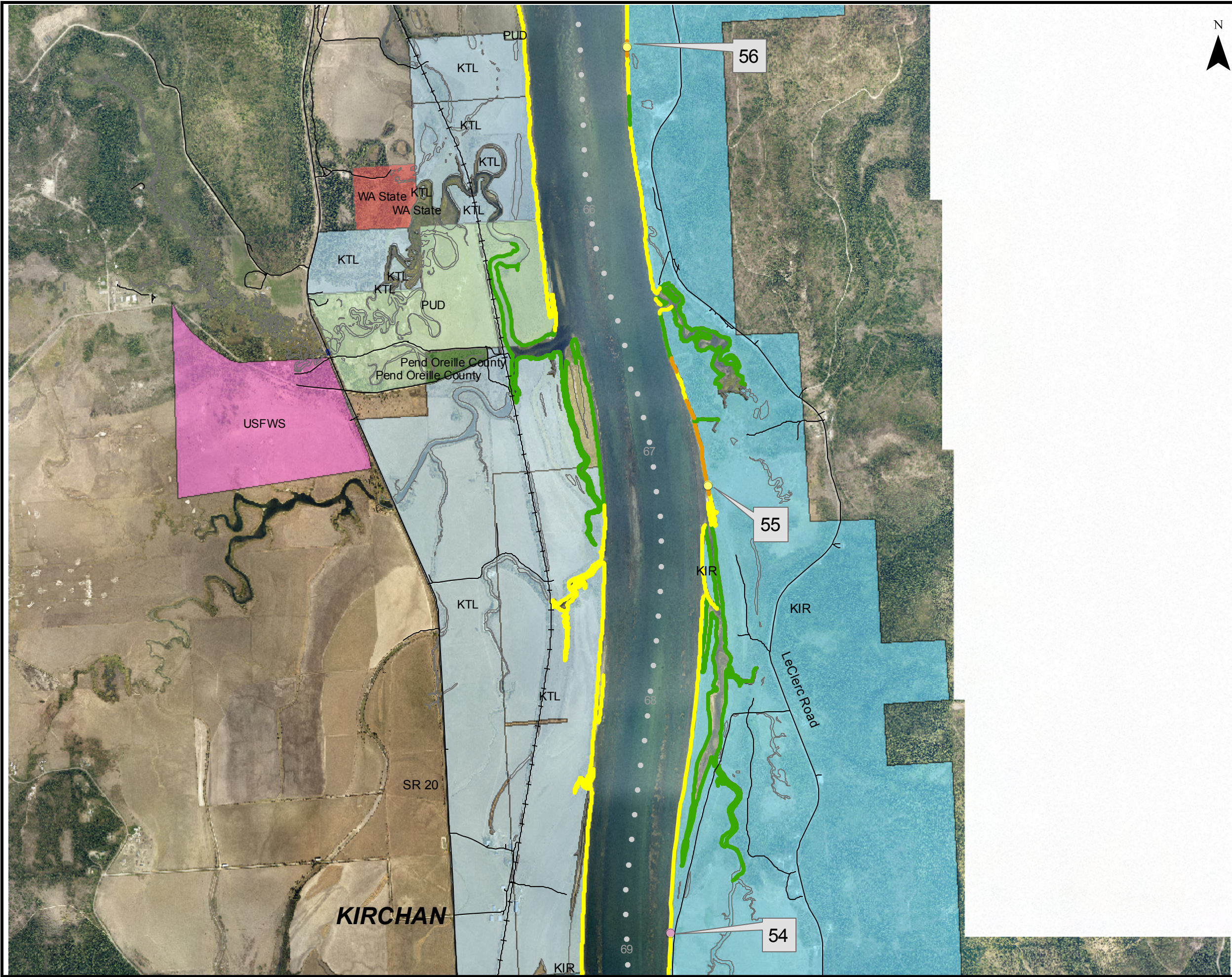
0 1,000 2,000 4,000 Feet

1 inch equals 2,000 feet

Updated January 2018

Erosion Rate Maps
Box Canyon Hydroelectric Project
Sheet 6 of 11





Legend

Erosion Monitoring Site

- Actively Monitored
- No Longer Monitored

— Roads

+ + Railroad

Erosion Rate

- Not Eroding
- Slow Rate
- Moderate Rate
- High Rate

Public Land Manager

- BLM
- COE
- USFS
- USFWS
- Town/City
- County
- State
- PUD Lands
- Kalispel Trust Lands
- Kalispel Indian Reservation

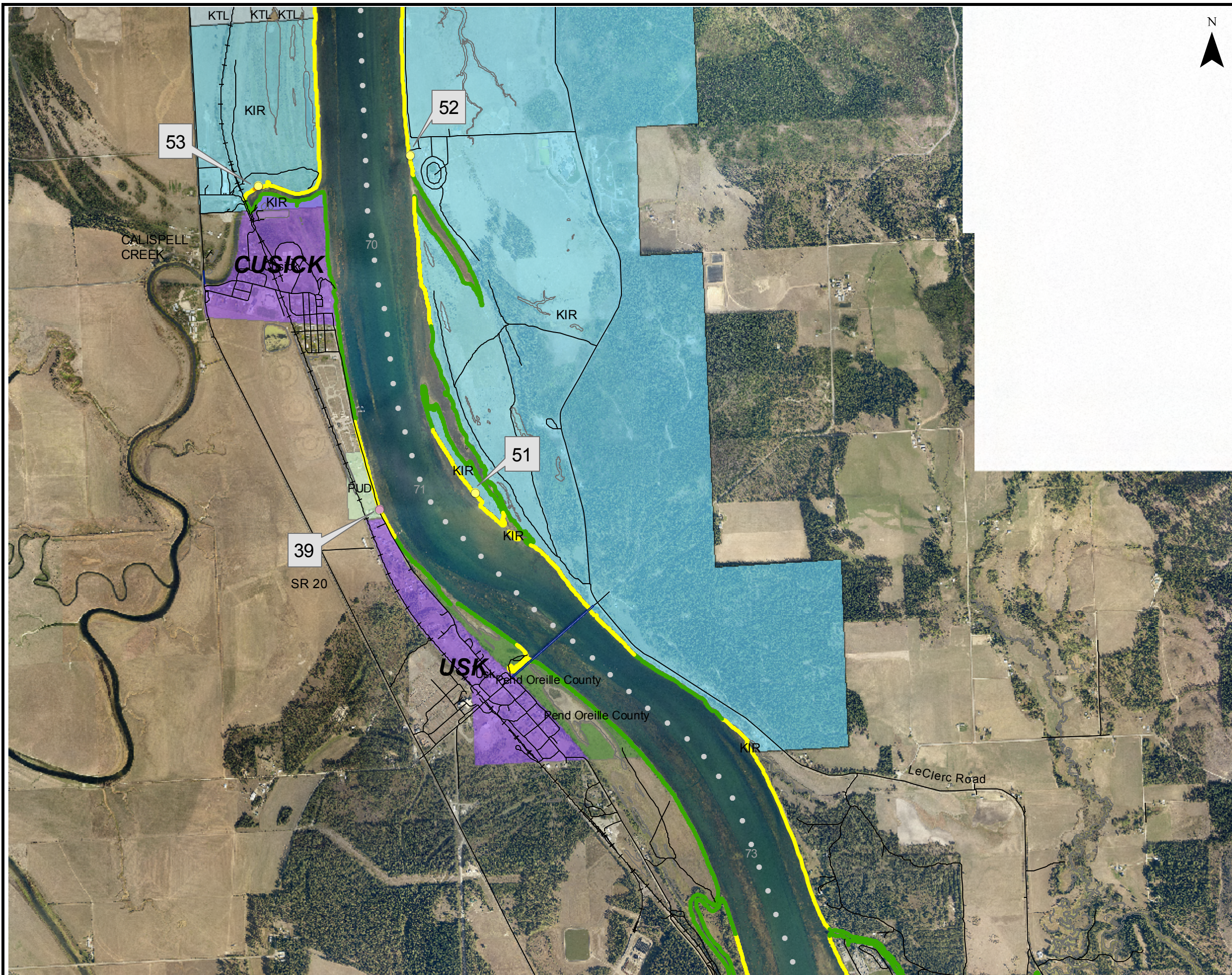
0 1,000 2,000 4,000 Feet

1 inch equals 2,000 feet

Updated January 2018

Erosion Rate Maps
Box Canyon Hydroelectric Project
Sheet 7 of 11





Legend

- Erosion Monitoring Site**
- Actively Monitored
 - No Longer Monitored

- Roads
- Railroad

- Erosion Rate**
- Not Eroding
 - Slow Rate
 - Moderate Rate
 - High Rate

- Public Land Manager**
- BLM
 - COE
 - USFS
 - USFWS
 - Town/City
 - County
 - State
 - PUD Lands
 - Kalispel Trust Lands
 - Kalispel Indian Reservation

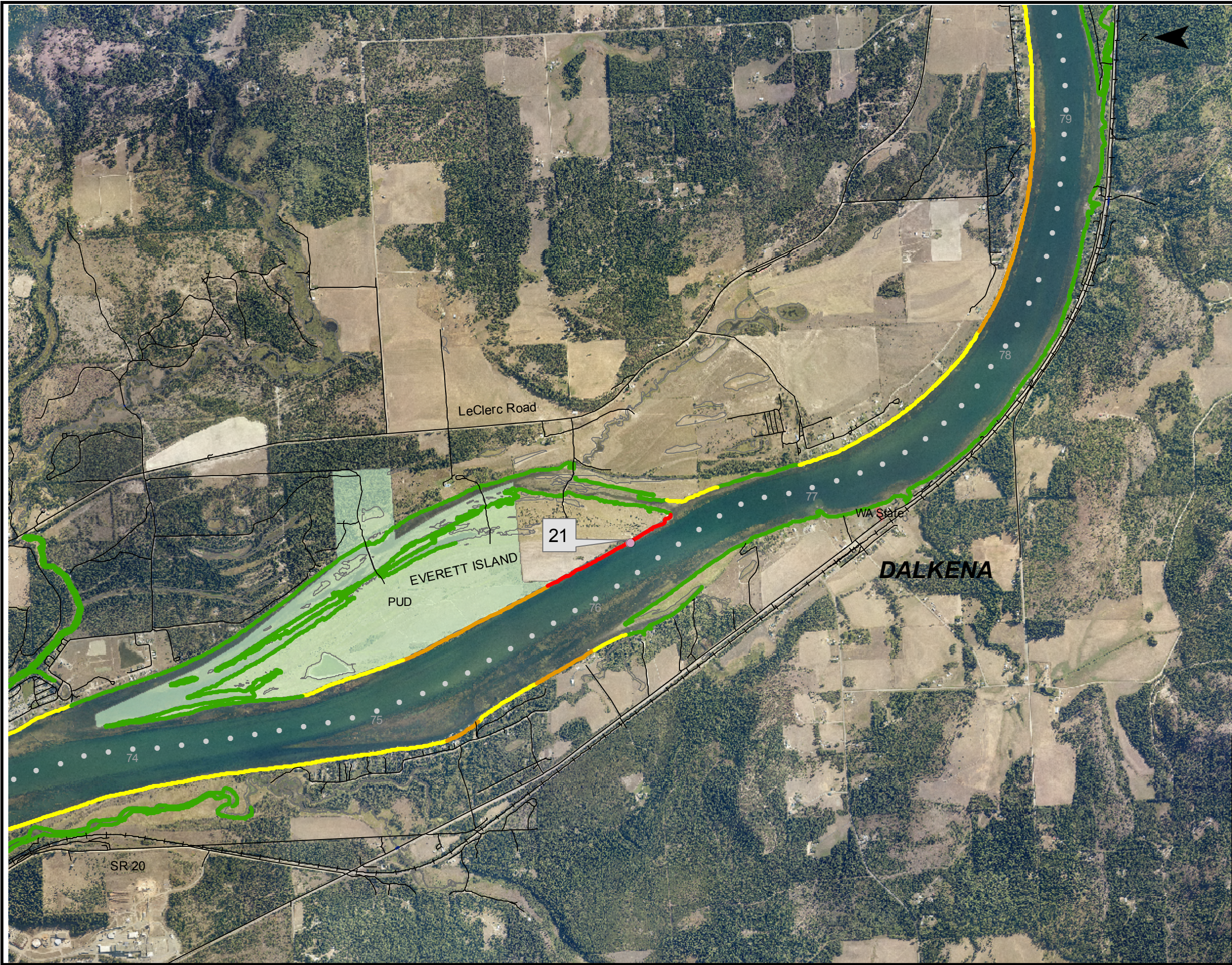
0 1,000 2,000 4,000 Feet

1 inch equals 2,000 feet

Updated January 2018

Erosion Rate Maps
Box Canyon Hydroelectric Project
Sheet 8 of 11





Legend

Erosion Monitoring Site

- Actively Monitored
- No Longer Monitored

Roads

Railroad

Erosion Rate

- Not Eroding
- Slow Rate
- Moderate Rate
- High Rate

Public Land Manager

- BLM
- COE
- USFS
- USFWS
- Town/City
- County
- State
- PUD Lands
- Kalispel Trust Lands

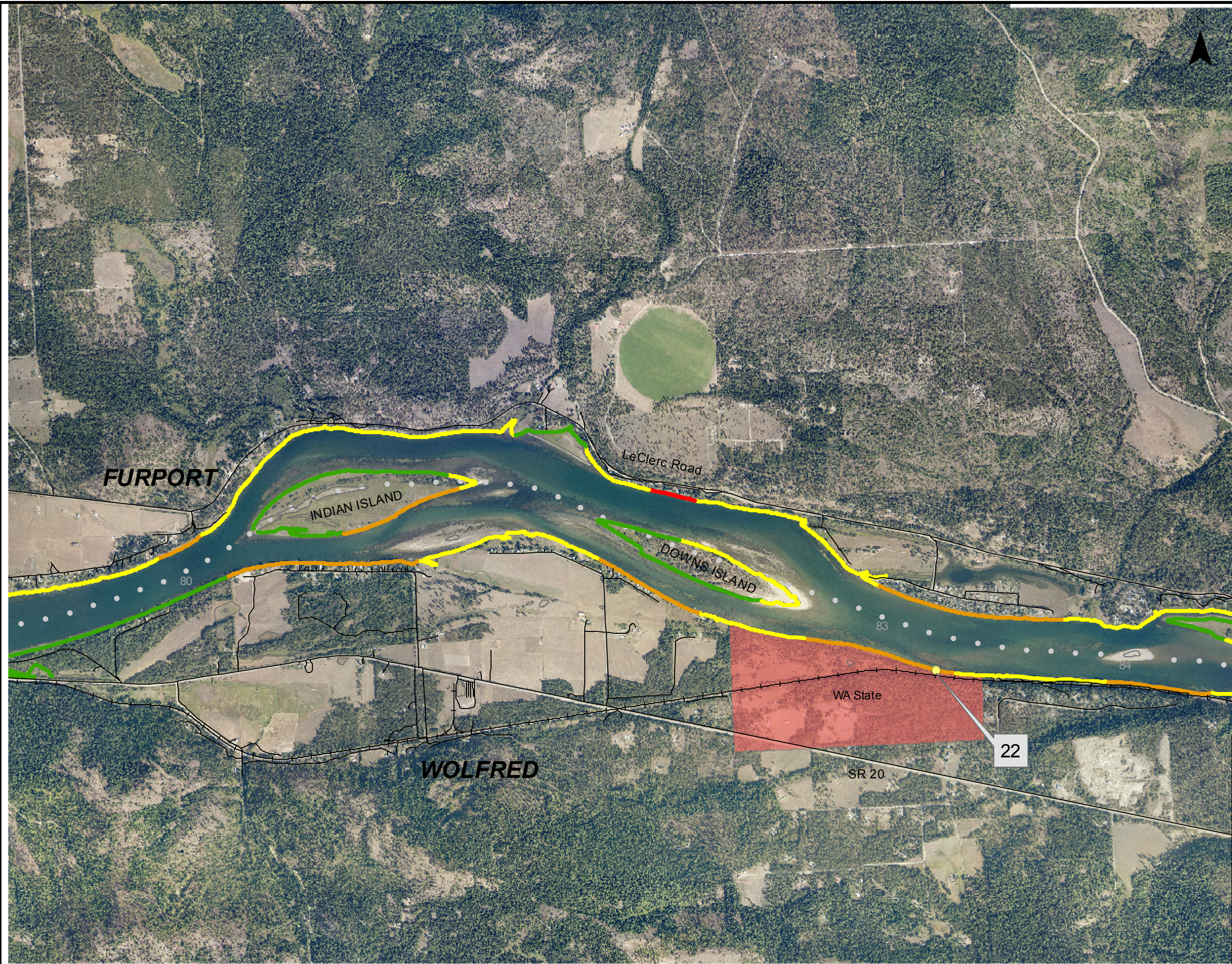
0 1,000 2,000 4,000 Feet

1 inch equals 2,000 feet

Updated January 2018

Erosion Rate Maps
Box Canyon Hydroelectric Project
Sheet 9 of 11





Legend

Erosion Monitoring Site

- Actively Monitored
- No Longer Monitored

Roads

Railroad

Erosion Rate

- Not Eroding
- Slow Rate
- Moderate Rate
- High Rate

Public Land Manager

- BLM
- COE
- USFS
- USFWS
- Town/City
- County
- State
- PUD Lands
- Kalispel Trust Lands

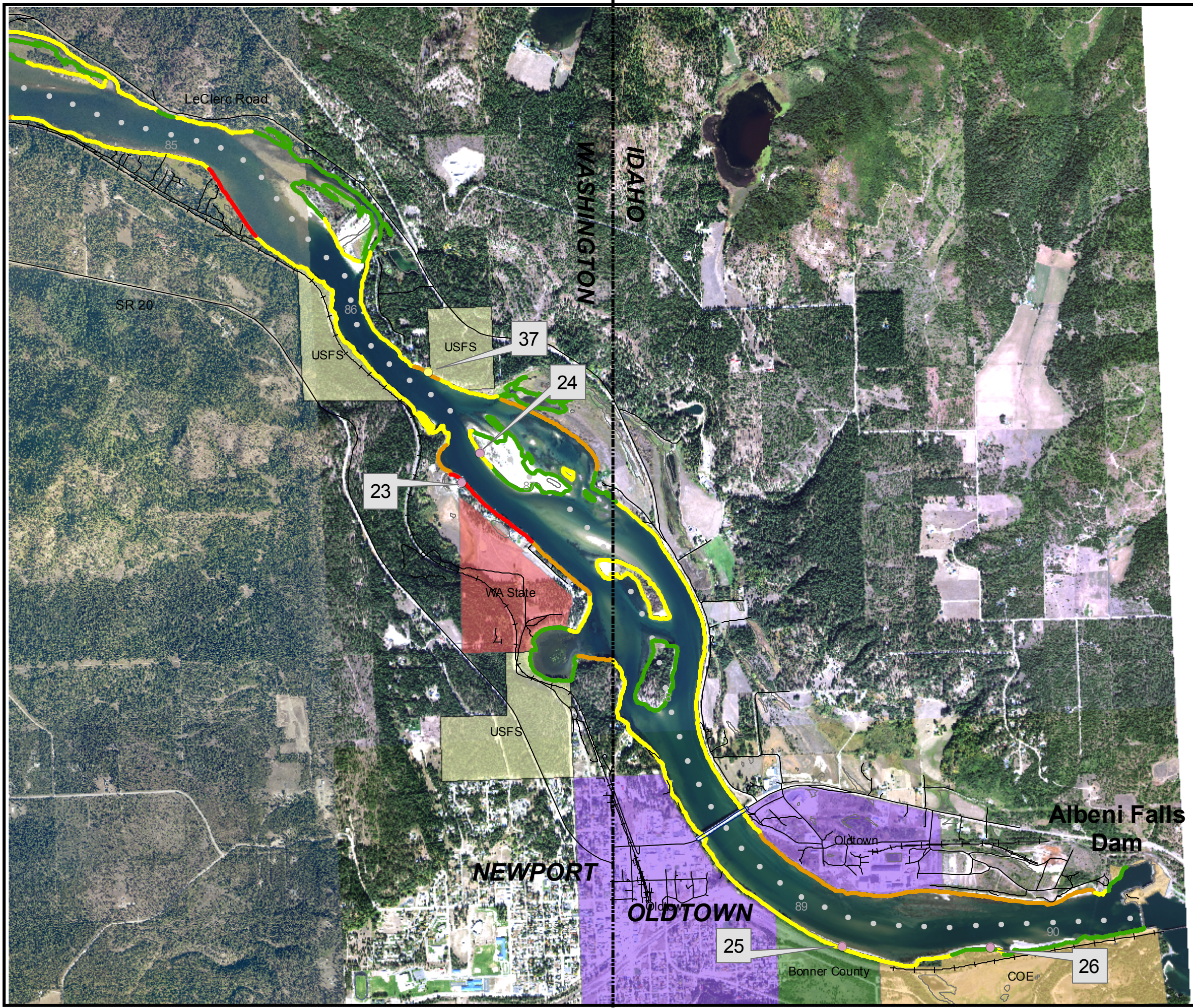
0 1,000 2,000 4,000 Feet

1 inch equals 2,000 feet

Updated January 2018

Erosion Rate Maps
Box Canyon Hydroelectric Project
Sheet 10 of 11





Legend

- Erosion Monitoring Site**
- Actively Monitored (yellow dot)
 - No Longer Monitored (pink dot)

- Roads (black line)
- Railroad (black line with cross-ticks)

- Erosion Rate**
- Not Eroding (green line)
 - Slow Rate (yellow line)
 - Moderate Rate (orange line)
 - High Rate (red line)

- Public Land Manager**
- BLM (light green)
 - COE (light orange)
 - USFS (light yellow)
 - USFWS (pink)
 - Town/City (purple)
 - County (dark green)
 - State (red)
 - PUD Lands (light green)
 - Kalispel Trust Lands (light blue)

0 1,000 2,000 4,000 Feet

1 inch equals 2,000 feet

Updated January 2018

Erosion Rate Maps
Box Canyon Hydroelectric Project
Sheet 11 of 11

