



## PLAN AHEAD FOR TREE REMOVAL NEAR UTILITY LINES

Are you planning on pruning or taking out trees on your property that are near the overhead powerlines? Before you begin, please consider this: most tree work related deaths and injuries are due to electric shock - not from touching the wire itself, but instead from a secondary source, such as when a tree branch or pruning tool touches a wire. Because of the dangers associated with power and utility lines, extreme care, caution, and planning must be taken when working around them. We ask that you plan ahead as it takes a bit of time and forethought to safely take care of trees near the lines. We ask that you please consider the following:

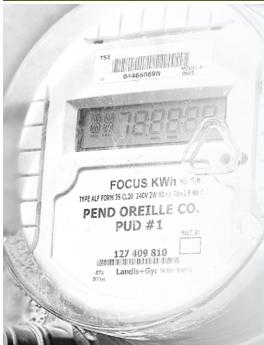
- 1. Give us a call before you begin** any work and ask to have our PUD tree crews look at the trees as we may remove them for you.
  - If you have a tree that is within our right of way, we will either prune it or remove it. **If you suspect or see an at risk tree** (a tree that is visibly dead, diseased, dying or unstable) near the power lines, please contact us and we will remove it.
- 2. If we won't remove the trees, we'll help make the situation safe** for you or your tree contractor to remove them. Call us and we will schedule a time to **come out for FREE and temporarily disconnect the power** until the work is completed.

***Removing trees that pose an imminent safety or reliability threat to you, your neighbors and the community is important to us. If you have any questions at all, please don't hesitate to reach out to us at 509-447-3137.***



**W**ith the arrival of spring, be sure your electric meter is visible and accessible, clear of vegetation and debris, and free of other obstacles, such as stacked firewood, bicycles or toys. Often forgotten is your water meter - please also remember to keep your water meter lid and box accessible so our staff can quickly read and access your meter when needed. A clear box makes it easy to ensure that the lid fits properly, is safe, and can be quickly turned off in an emergency.

Please make sure that no objects cover or block access to the meter or meter box. Common items found blocking water meters include cars, trailers, garbage cans, landscape bark or gravel. It is important to trim bushes, trees, and grass that block the way or cover the meter. During the growing season, plants can cover a water meter box very quickly. Lastly, if your meter is located behind a gate that is normally kept locked, please contact us to arrange access.







## Pend Oreille County Campgrounds Maps & Information

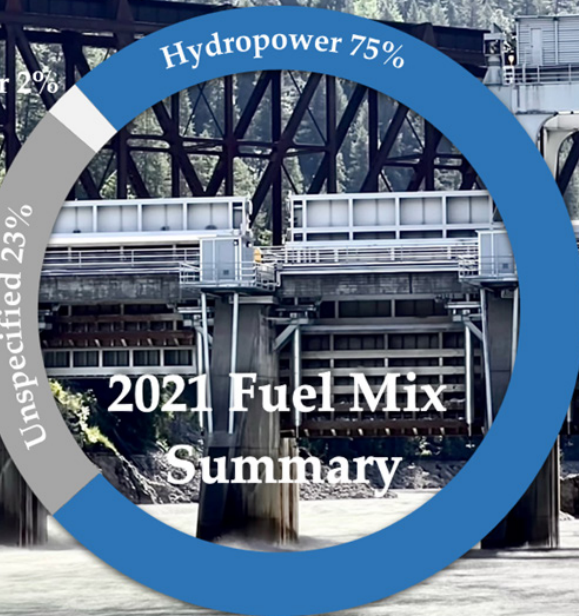
Are you excited to make plans to get out and explore the area this summer? Pend Oreille County offers numerous campgrounds and recreational sites. As a condition of the PUD's FERC license to operate Box Canyon Dam, we publish a recreation map which includes detailed information and site specific maps on most of the campground and recreational sites in the area. Please use the link below to view a PDF of the maps and related information or for a hard copy map, please stop in and see us.

[Campground Map](#)

## Pend Oreille PUD 2021 Fuel Mix

All Washington state utilities report their sources of electricity to the Department of Commerce and they combine the information with data from wholesale markets to determine a fuel mix summary for each utility. The fuel mix is based on the generating plants and contracts of each utility and the Bonneville Power Administration. The report is published by the Department of Commerce and the 2021 report is available here: [Washington State Electric Utility Fuel Mix Disclosure Report](#). Please note - the fuel mix data for 2022 is currently being compiled.

*Washington State Law requires the PUD to disclose the mix of fuels used to generate the electricity sold to its customers (under RCW 19.29A).*



## PEND OREILLE COUNTY CAMPGROUNDS Maps & Information

**Contact Information**

United States Forest Service  
509-447-7500 or 509-446-7500  
[www.fs.usda.gov/land/Reservations](http://www.fs.usda.gov/land/Reservations)  
877-444-6777 [www.recreation.gov](http://www.recreation.gov)

Pend Oreille Public Utility District  
509-447-3137  
[www.popud.org](http://www.popud.org)

Pend Oreille County  
509-447-4513  
[www.pocountywa.gov](http://www.pocountywa.gov)

WA State Dept of Natural Resources  
509-484-7424  
[www.dnr.wa.gov](http://www.dnr.wa.gov)

**Recreation Symbols for Campgrounds on Back**

- Group Camping
- Campground
- Reservable Sites
- Recreation Trailhead
- Site Fee
- Viewing
- Trailer Camping
- Dump Station
- Restrooms
- Cabin
- Shower
- Potable Water
- Pets on Leash
- Hiking

