

Legend

Erosion Monitoring Site

- Actively Monitored
- No Longer Monitored

Erosion Rate

- Not Eroding
- Slow Rate
- Moderate Rate
- High Rate

Public Land Manager

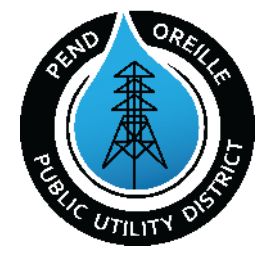
- BLM
- COE
- USFS
- USFWS
- Town/City
- County
- State
- PUD Lands
- Kalispel Trust Lands

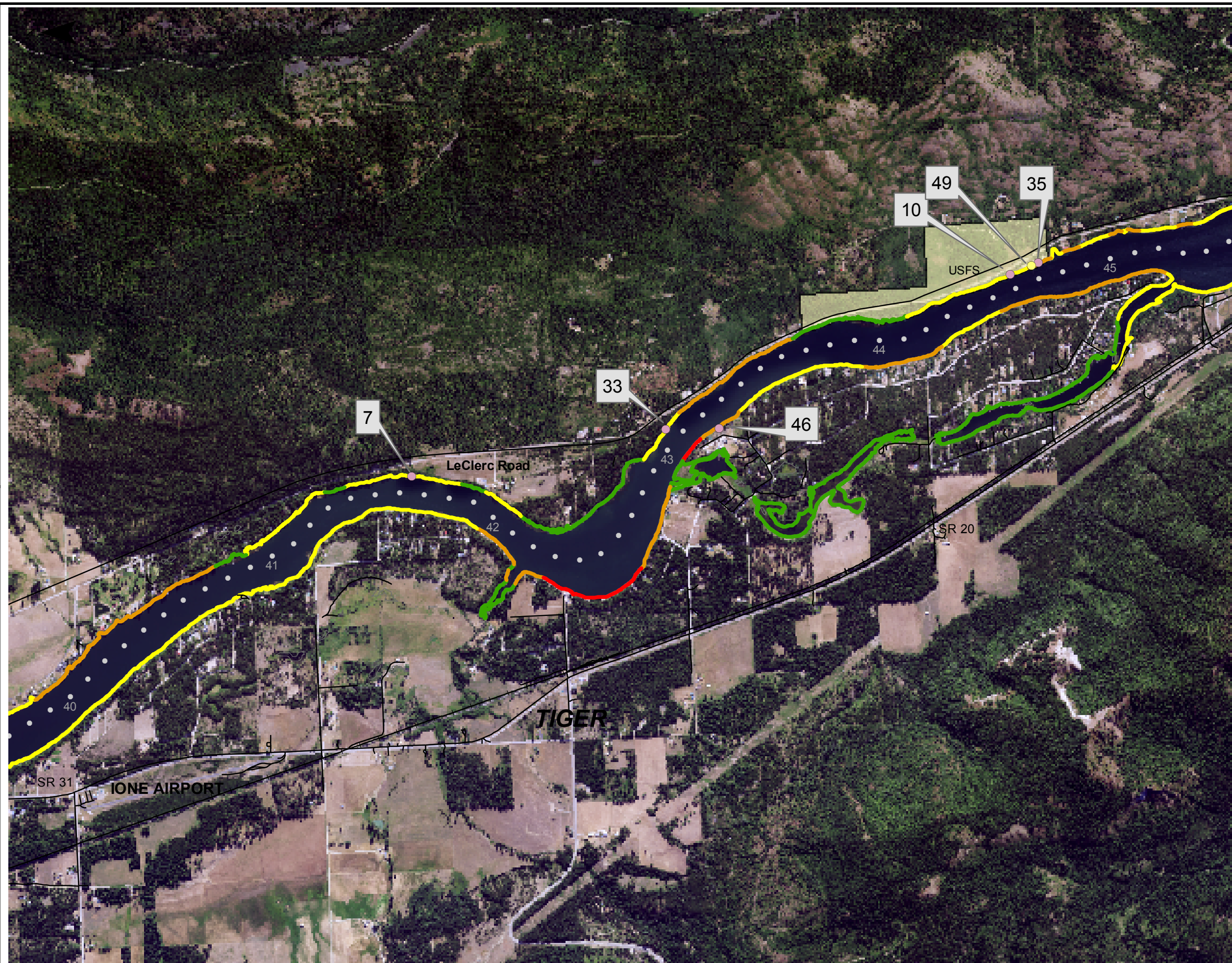
0 1,000 2,000 4,000 Feet

1 inch equals 2,000 feet

Updated February 2025

Erosion Rate Hazard Maps
 Box Canyon Hydroelectric Project
 Sheet 1 of 11





Legend

Erosion Monitoring Site

- Actively Monitored
- No Longer Monitored

— Roads

—+— Railroad

Erosion Rate

- Not Eroding
- Slow Rate
- Moderate Rate
- High Rate

Public Land Manager

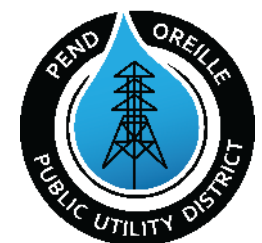
- BLM
- COE
- USFS
- USFWS
- Town/City
- County
- State
- PUD Lands
- Kalispel Trust Lands

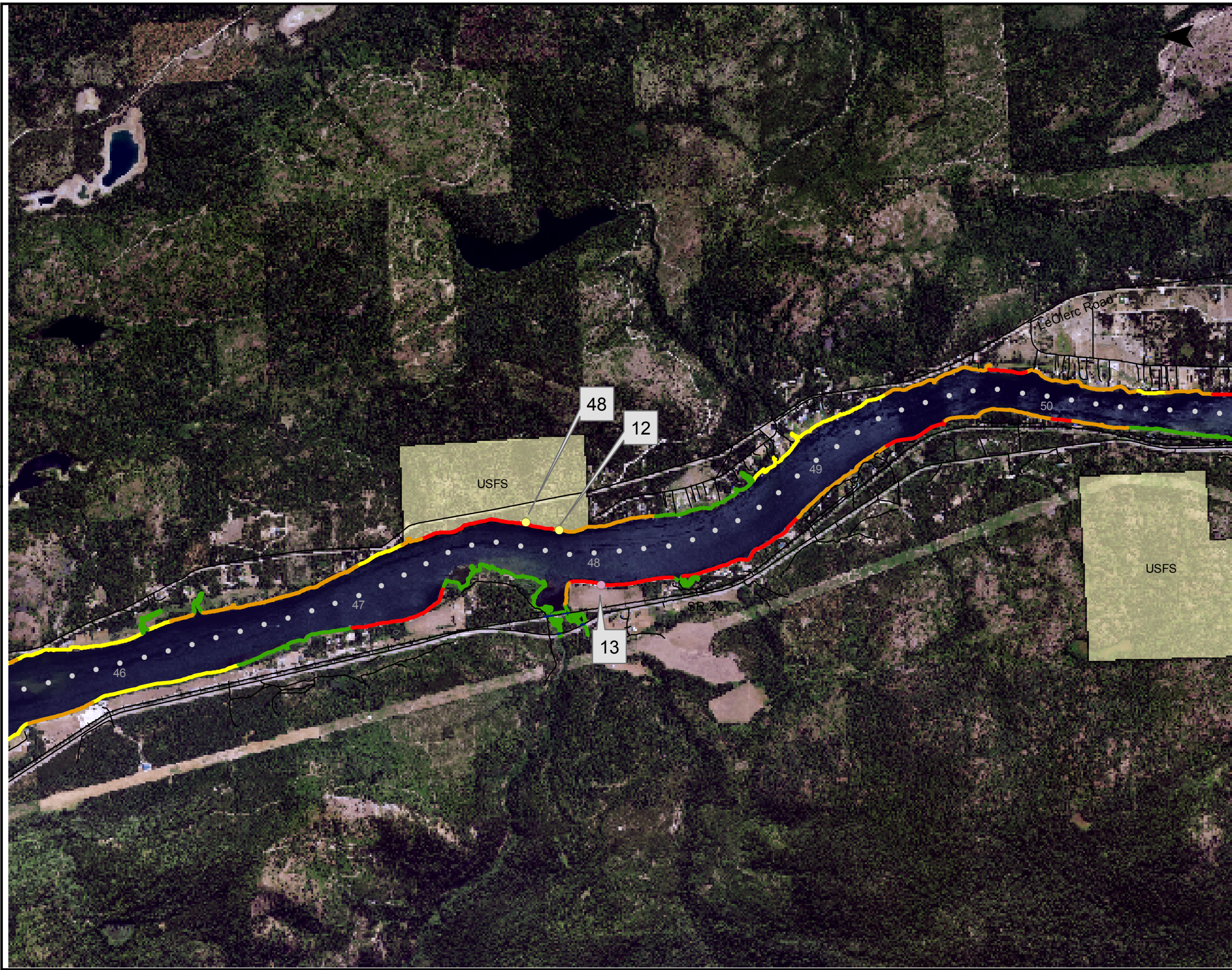
0 1,000 2,000 4,000 Feet

1 inch equals 2,000 feet

Updated February 2025

Erosion Rate Hazard Maps
 Box Canyon Hydroelectric Project
 Sheet 2 of 11





Legend

Erosion Monitoring Site

- Actively Monitored
- No Longer Monitored

— Roads

—+— Railroad

Erosion Rate

- Not Eroding
- Slow Rate
- Moderate Rate
- High Rate

Public Land Manager

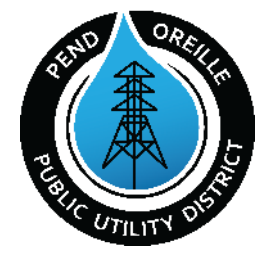
- BLM
- COE
- USFS
- USFWS
- Town/City
- County
- State
- PUD Lands
- Kalispel Trust Lands

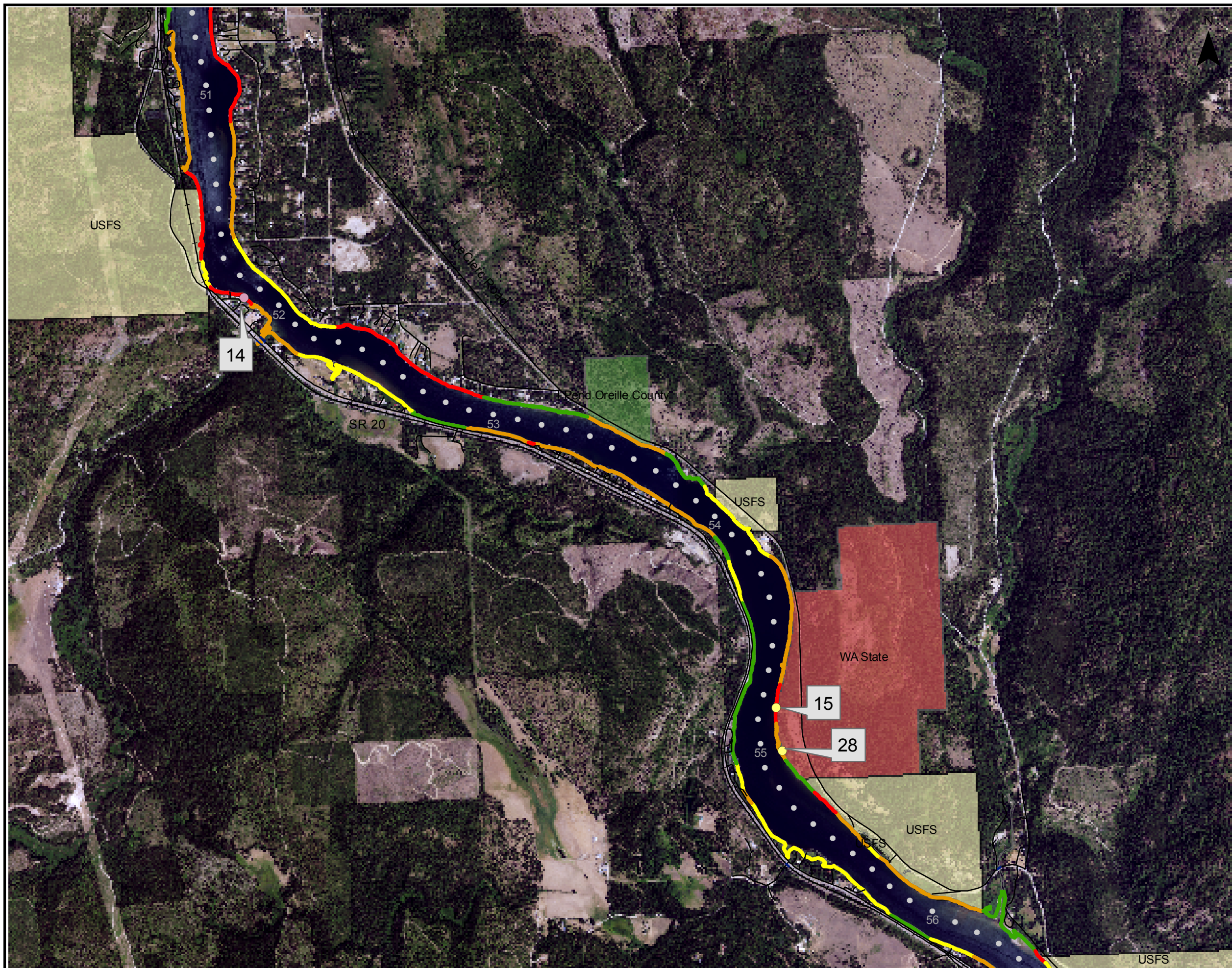
0 1,000 2,000 4,000 Feet

1 inch equals 2,000 feet

Updated February 2025

Erosion Rate Hazard Maps
 Box Canyon Hydroelectric Project
 Sheet 3 of 11





Legend

- Erosion Monitoring Site**
- Actively Monitored
 - No Longer Monitored

- Roads
- +— Railroad

- Erosion Rate**
- Not Eroding
 - Slow Rate
 - Moderate Rate
 - High Rate

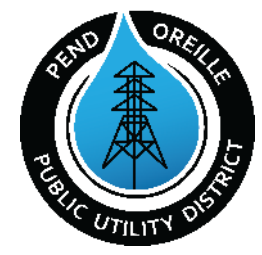
- Public Land Manager**
- BLM
 - COE
 - USFS
 - USFWS
 - Town/City
 - County
 - State
 - PUD Lands
 - Kalispel Trust Lands

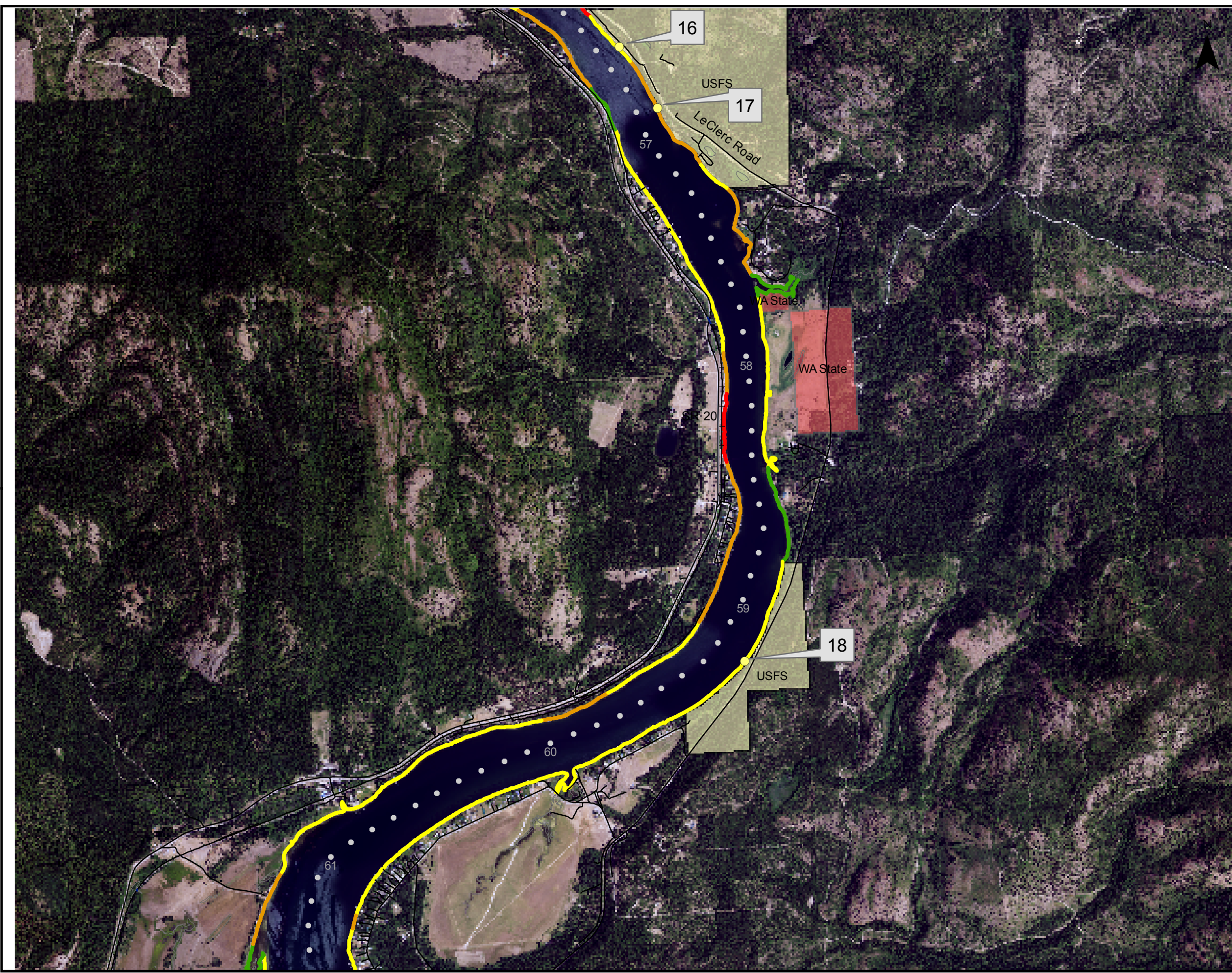
0 1,000 2,000 4,000 Feet

1 inch equals 2,000 feet

Updated February 2025

Erosion Rate Hazard Maps
 Box Canyon Hydroelectric Project
 Sheet 4 of 11





Legend

- Erosion Monitoring Site**
- Actively Monitored
 - No Longer Monitored

- Roads
- Railroad

- Erosion Rate**
- Not Eroding
 - Slow Rate
 - Moderate Rate
 - High Rate

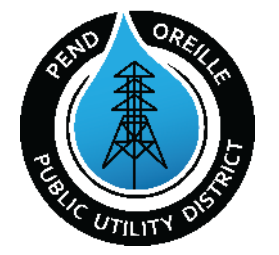
- Public Land Manager**
- BLM
 - COE
 - USFS
 - USFWS
 - Town/City
 - County
 - State
 - PUD Lands
 - Kalispel Trust Lands

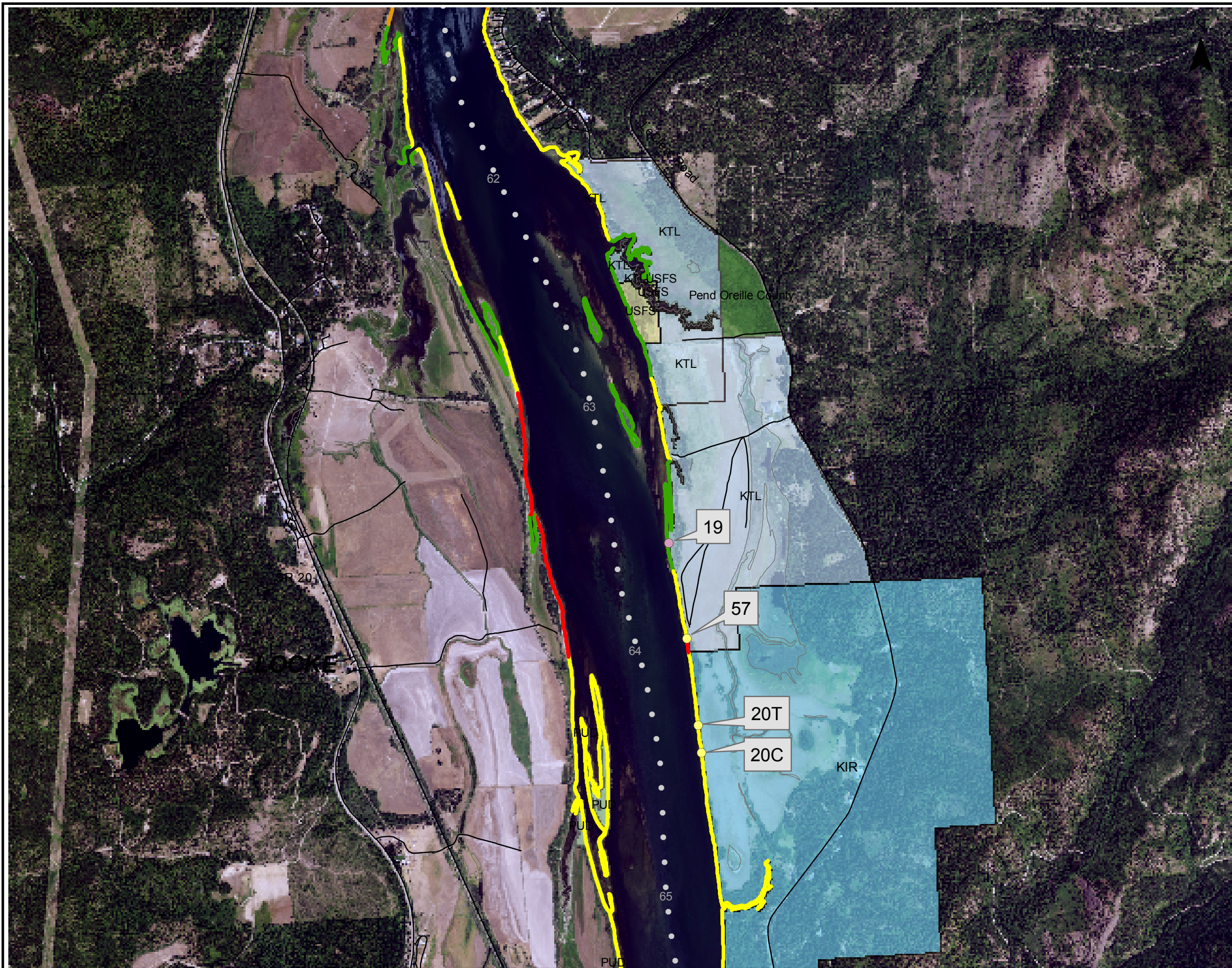
0 1,000 2,000 4,000 Feet

1 inch equals 2,000 feet

Updated February 2025

Erosion Rate Hazard Maps
 Box Canyon Hydroelectric Project
 Sheet 5 of 11





Legend

Erosion Monitoring Site

- Actively Monitored
- No Longer Monitored

— Roads

—+— Railroad

Erosion Rate

- Not Eroding
- Slow Rate
- Moderate Rate
- High Rate

Public Land Manager

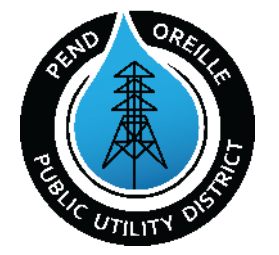
- BLM
- COE
- USFS
- USFWS
- Town/City
- County
- State
- PUD Lands
- Kalispel Trust Lands
- Kalispel Indian Reservation

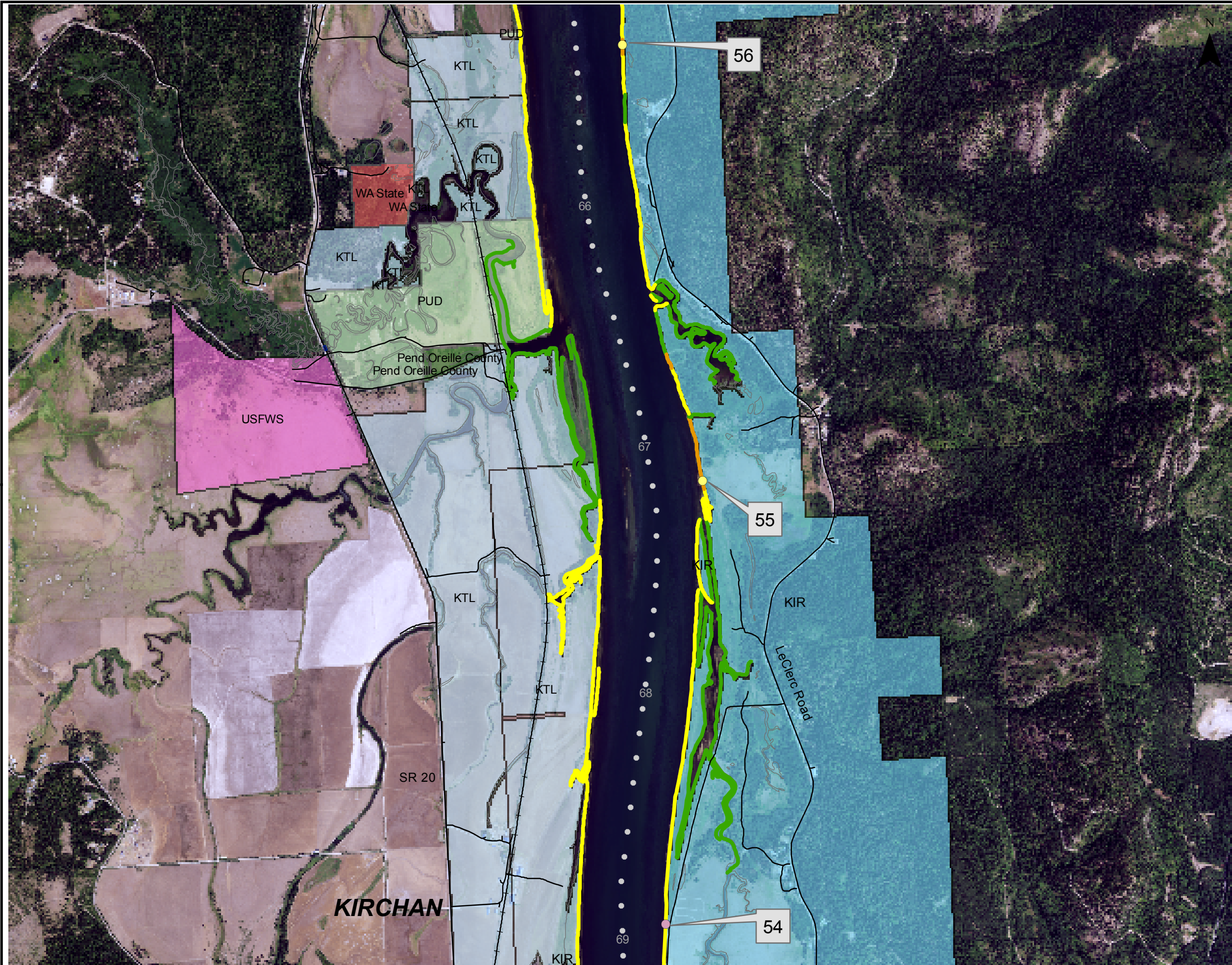
0 1,000 2,000 4,000 Feet

1 inch equals 2,000 feet

Updated February 2025

Erosion Rate Hazard Maps
 Box Canyon Hydroelectric Project
 Sheet 6 of 11





Legend

Erosion Monitoring Site

- Actively Monitored (Yellow circle)
- No Longer Monitored (Purple circle)

Erosion Rate

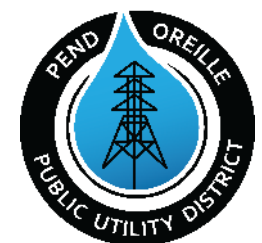
- Not Eroding (Green line)
- Slow Rate (Yellow line)
- Moderate Rate (Orange line)
- High Rate (Red line)

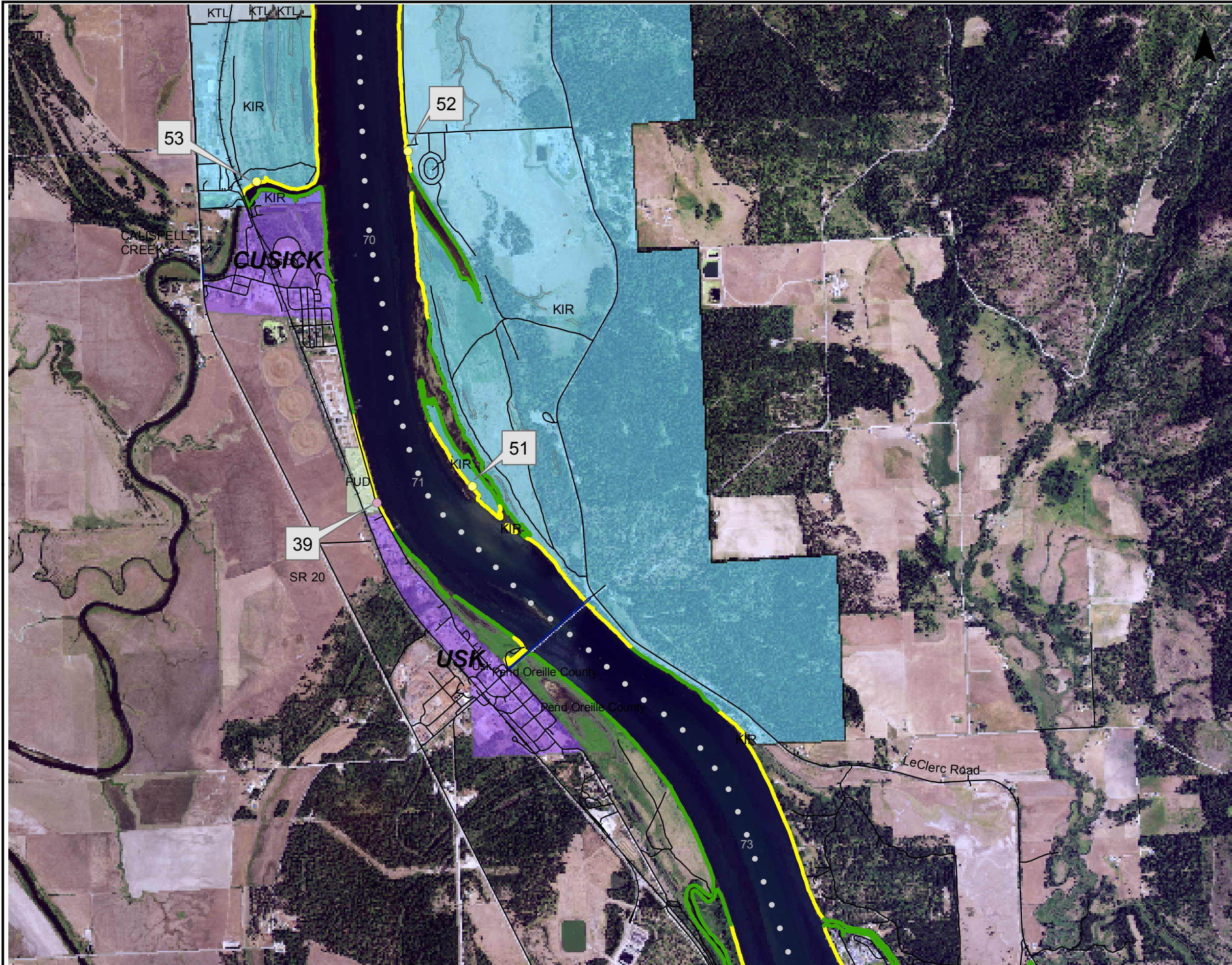
Public Land Manager

- BLM (Light green)
- COE (Light orange)
- USFS (Light yellow)
- USFWS (Pink)
- Town/City (Purple)
- County (Dark green)
- State (Red)
- PUD Lands (Light green)
- Kalispel Trust Lands (Light blue)
- Kalispel Indian Reservation (Dark blue)

0 1,000 2,000 4,000 Feet
 1 inch equals 2,000 feet
 Updated February 2025

Erosion Rate Hazard Maps
 Box Canyon Hydroelectric Project
 Sheet 7 of 11





Legend

Erosion Monitoring Site

- Actively Monitored
- No Longer Monitored

— Roads

—+— Railroad

Erosion Rate

- Not Eroding
- Slow Rate
- Moderate Rate
- High Rate

Public Land Manager

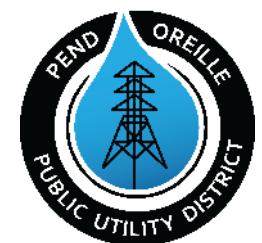
- BLM
- COE
- USFS
- USFWS
- Town/City
- County
- State
- PUD Lands
- Kalispel Trust Lands
- Kalispel Indian Reservation

0 1,000 2,000 4,000 Feet

1 inch equals 2,000 feet

Updated February 2025

Erosion Rate Hazard Maps
 Box Canyon Hydroelectric Project
 Sheet 8 of 11





Legend

Erosion Monitoring Site

- Actively Monitored (Yellow circle)
- No Longer Monitored (Pink circle)

Erosion Rate

- Not Eroding (Green line)
- Slow Rate (Yellow line)
- Moderate Rate (Orange line)
- High Rate (Red line)

Public Land Manager

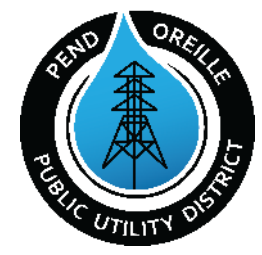
- BLM (Light Green)
- COE (Light Orange)
- USFS (Light Yellow)
- USFWS (Pink)
- Town/City (Purple)
- County (Dark Green)
- State (Red)
- PUD Lands (Light Green)
- Kalispel Trust Lands (Light Blue)

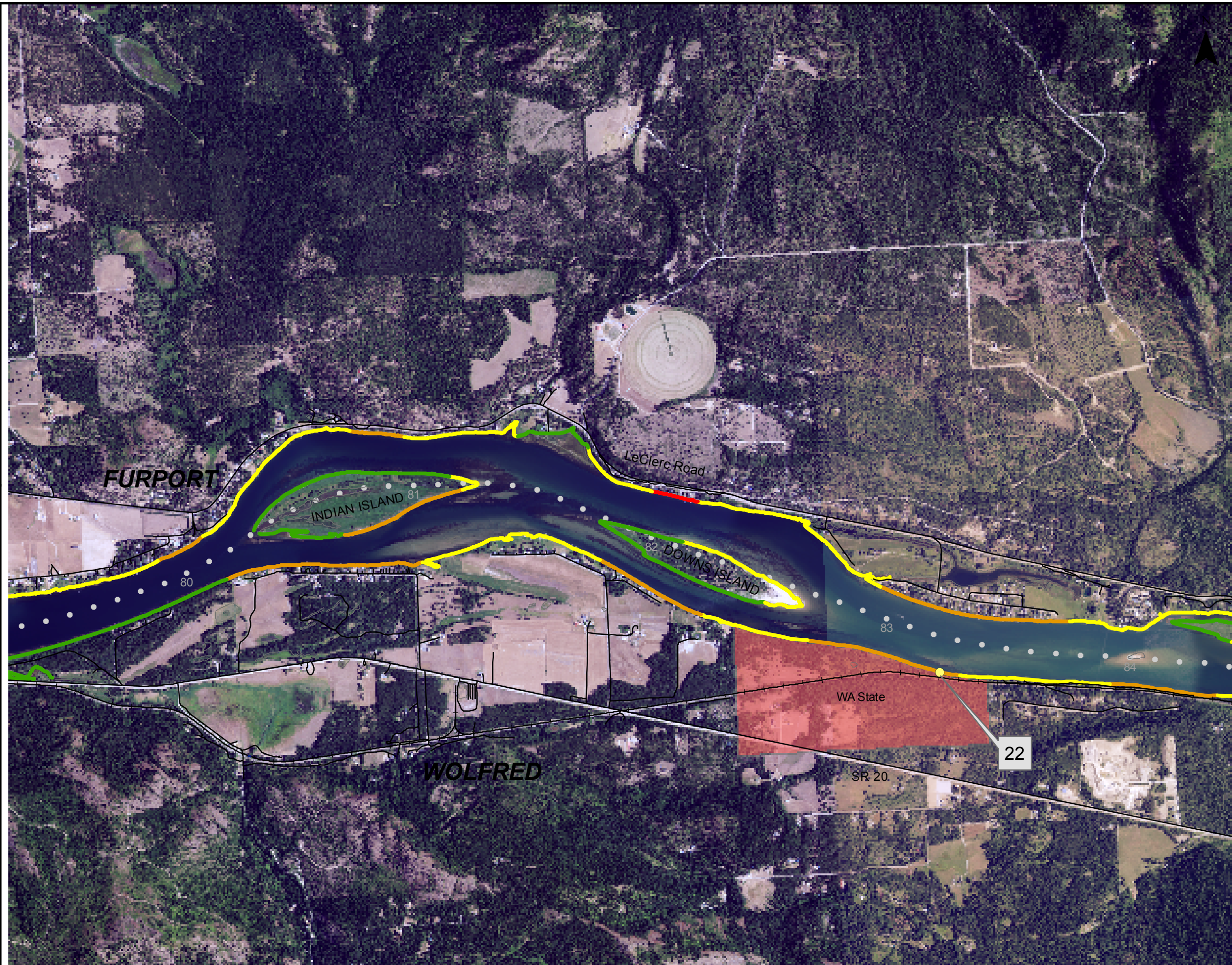
0 1,000 2,000 4,000 Feet

1 inch equals 2,000 feet

Updated February 2025

Erosion Rate Hazard Maps
 Box Canyon Hydroelectric Project
 Sheet 9 of 11





Legend

- Erosion Monitoring Site**
- Actively Monitored
 - No Longer Monitored

- Roads
- +— Railroad

- Erosion Rate**
- Not Eroding
 - Slow Rate
 - Moderate Rate
 - High Rate

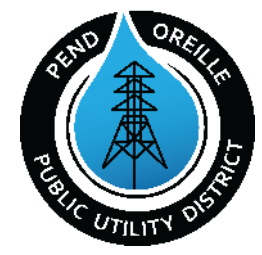
- Public Land Manager**
- BLM
 - COE
 - USFS
 - USFWS
 - Town/City
 - County
 - State
 - PUD Lands
 - Kalispel Trust Lands

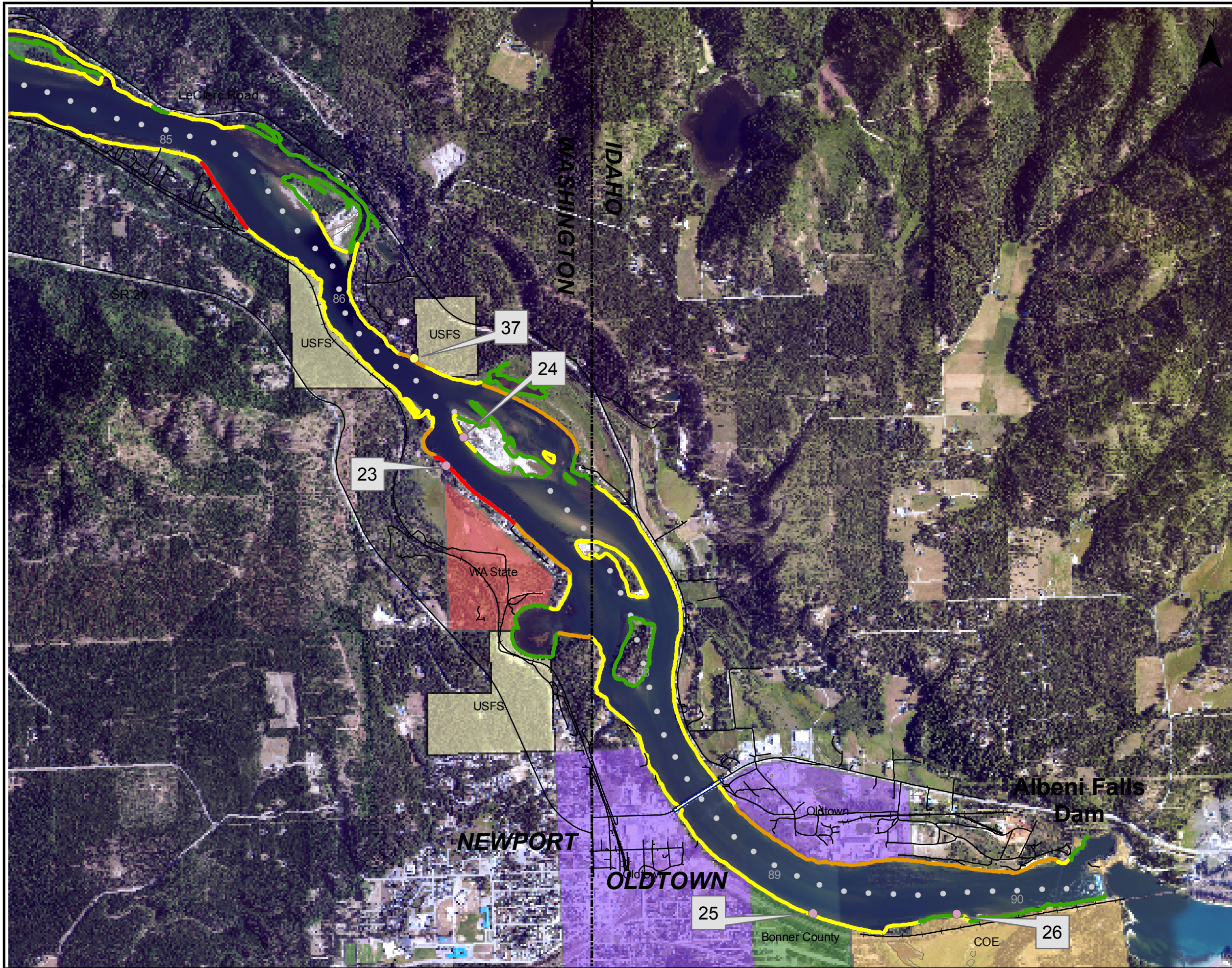
0 1,000 2,000 4,000 Feet

1 inch equals 2,000 feet

Updated February 2025

Erosion Rate Hazard Maps
 Box Canyon Hydroelectric Project
 Sheet 10 of 11





Legend

Erosion Monitoring Site

- Actively Monitored (Yellow dot)
- No Longer Monitored (Pink dot)

Erosion Rate

- Not Eroding (Green line)
- Slow Rate (Yellow line)
- Moderate Rate (Orange line)
- High Rate (Red line)

Public Land Manager

- BLM (Tan)
- COE (Orange)
- USFS (Light Green)
- USFWS (Pink)
- Town/City (Purple)
- County (Dark Green)
- State (Red)
- PUD Lands (Light Blue)
- Kalispel Trust Lands (Light Purple)

0 1,000 2,000 4,000 Feet

1 inch equals 2,000 feet

Updated February 2025

Erosion Rate Hazard Maps
 Box Canyon Hydroelectric Project
 Sheet 11 of 11

