

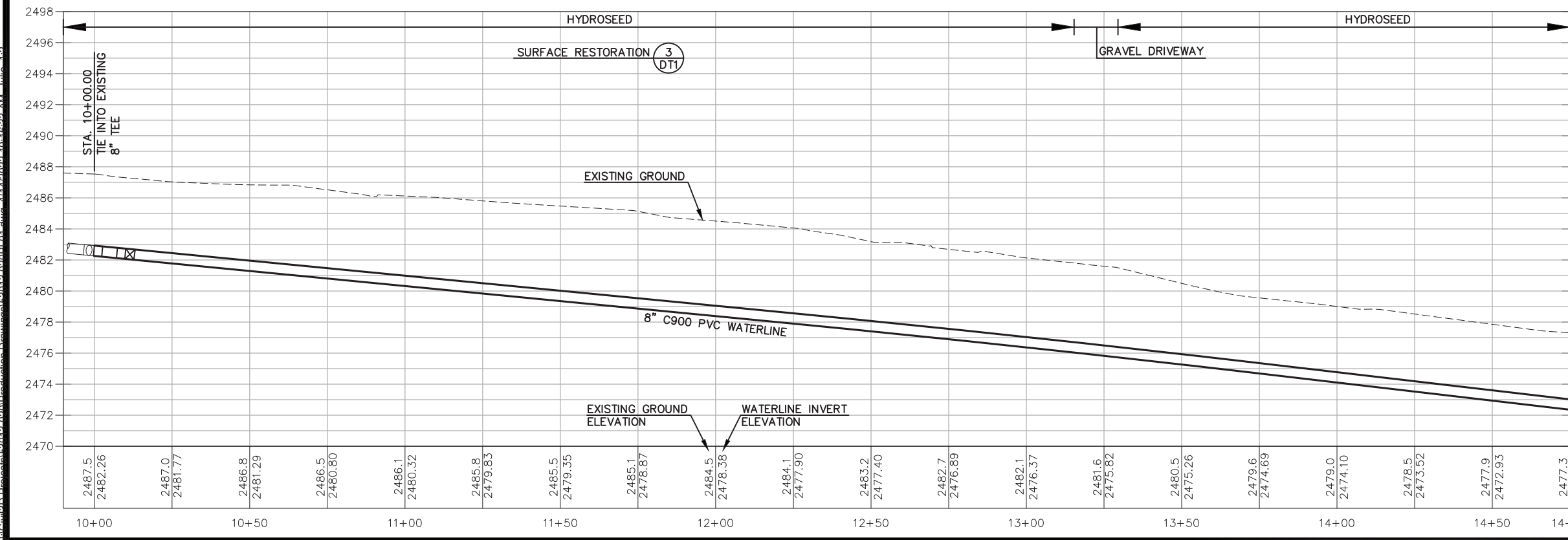
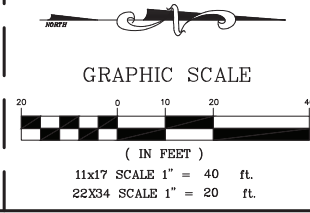
**UNDERGROUND SERVICE ALERT**  
**ONE-CALL NUMBER**  
**811**  
 CALL TWO BUSINESS DAYS BEFORE YOU DIG

COPYRIGHT 2022  
 Welch-Comer & Associates, Inc.  
 This document, and ideas and designs incorporated herein, as an instrument of professional service, is the property of Welch-Comer & Associates, Inc., and is not to be used in whole or in part for any other project without the written authorization of Welch-Comer & Associates, Inc.



04/14/22

MATCHLINE STA. 14+75.00



**WELCH-COMER**  
 ENGINEERS & SURVEYORS

www.welchcomer.com  
 330 E. Lakeside Ave, Suite 101  
 Coeur d'Alene, ID 83814

208-664-9382  
 (toll free) 877-815-5672  
 (fax) 208-664-5946

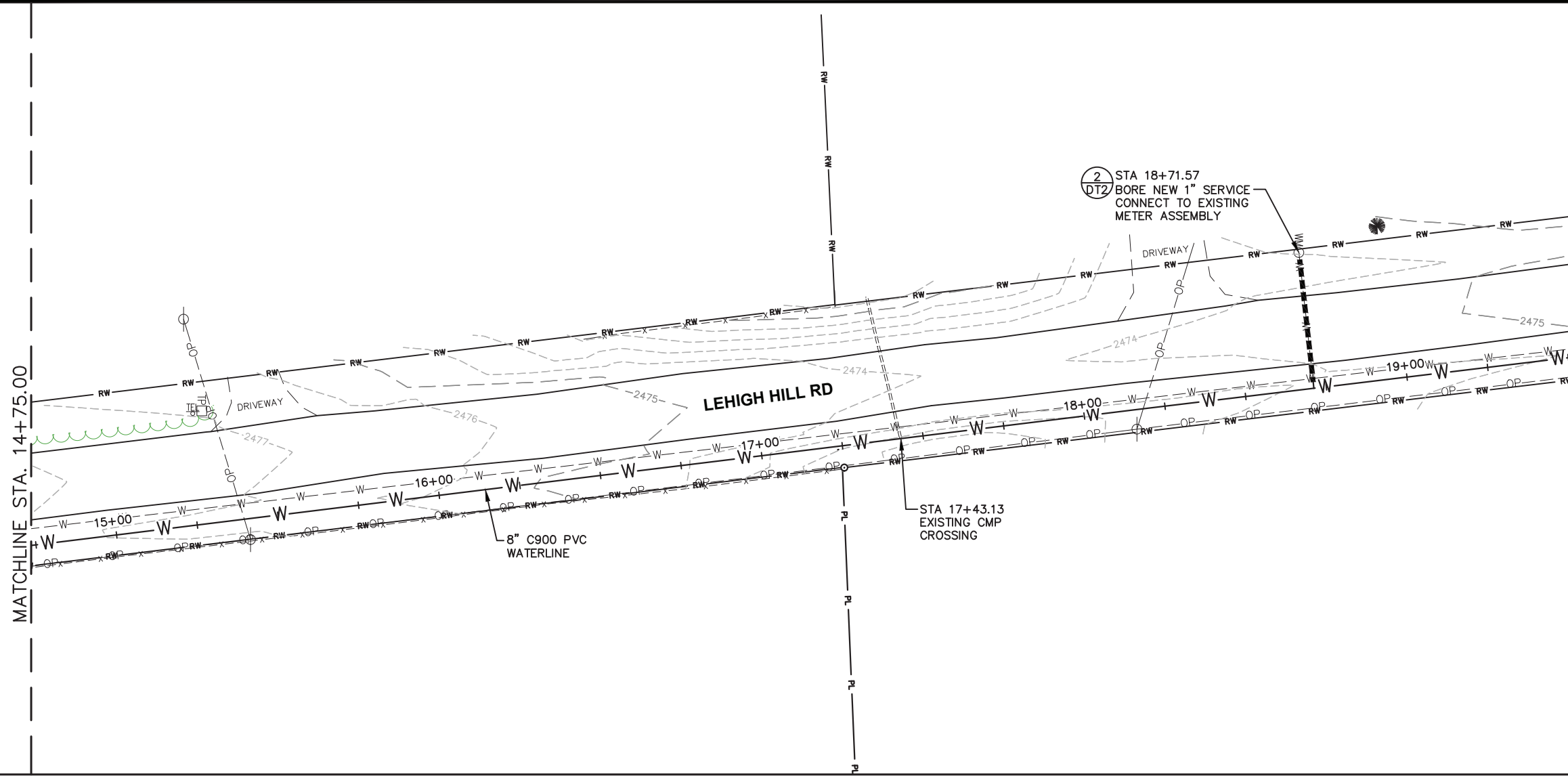
NO.	DATE	REVISION DESCRIPTION	BY

PEND OREILLE COUNTY PUD NO. 1  
**METALINE FALLS - LEHIGH WATERLINE IMPROVEMENTS**

BID SCHEDULE 2  
 PLAN AND PROFILE

PROJ NO: 53013.020  
 DESIGNED BY: S.B.C.  
 DRAWN BY: J.A.L.  
 CHECKED BY: S.B.C.  
 DWG NAME: 53013.020PL01.DWG  
 DATE: 04-14-22  
 SHEET NO:

**C4**

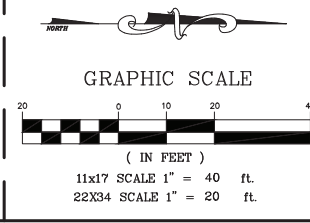


**UNDERGROUND SERVICE ALERT**  
**ONE-CALL NUMBER**  
**811**  
 CALL TWO BUSINESS DAYS BEFORE YOU DIG

COPYRIGHT 2022  
 Welch-Comer & Associates, Inc.  
 This document, and ideas and designs incorporated herein, as an instrument of professional service, is the property of Welch-Comer & Associates, Inc., and is not to be used in whole or in part for any other project without the written authorization of Welch-Comer & Associates, Inc.



04/14/22

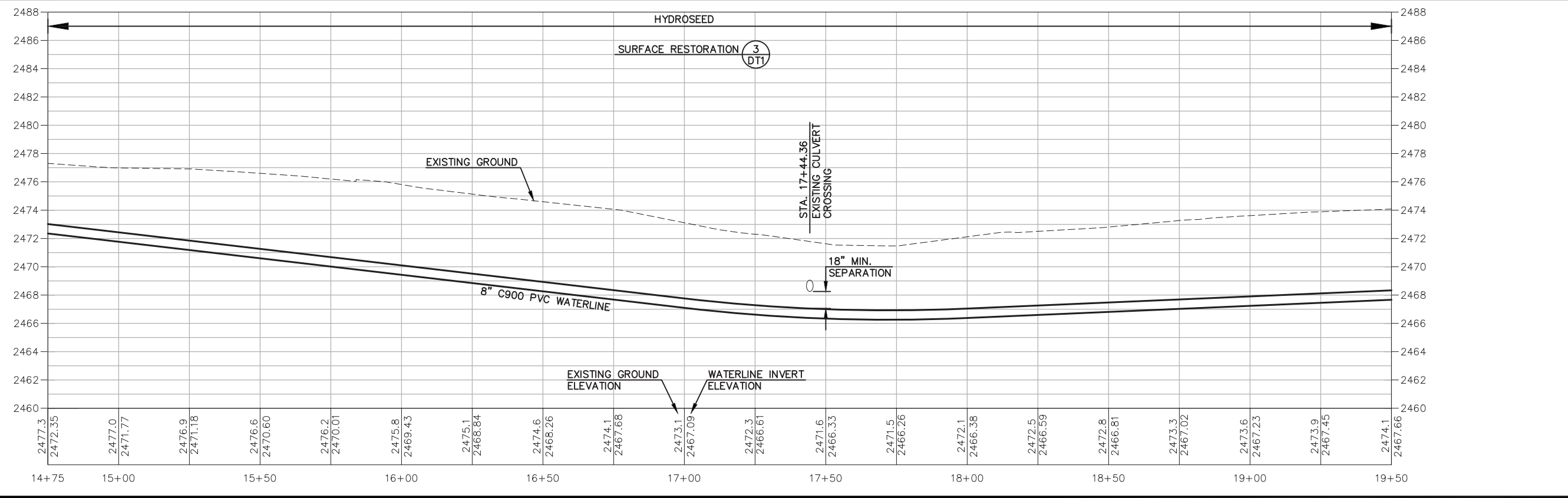


**WELCH-COMER**  
 ENGINEERS | SURVEYORS

www.welchcomer.com  
 330 E. Lakeside Ave, Suite 101  
 Coeur d'Alene, ID 83814

208-664-9382  
 (toll free) 877-815-5672  
 (fax) 208-664-5946

NO.	DATE	REVISION DESCRIPTION	BY



PEND OREILLE COUNTY PUD NO. 1  
**METALINE FALLS - LEHIGH WATERLINE IMPROVEMENTS**  
 BID SCHEDULE 2  
 PLAN AND PROFILE

PROJ NO: 53013.020  
 DESIGNED BY: S.B.C.  
 DRAWN BY: J.A.L.  
 CHECKED BY: S.B.C.  
 DWG NAME: 53013.020PL01.DWG  
 DATE: 04-14-22  
 SHEET NO:

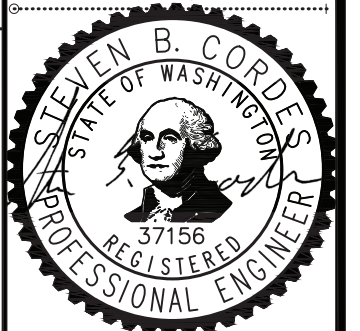
**C5**

M:\CH\2022\Drawings\53013.020\Drawings\53013.020PL01.dwg - 11:44:20 AM - 10-16-26 AM - July 14, 2022

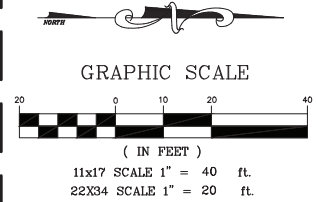
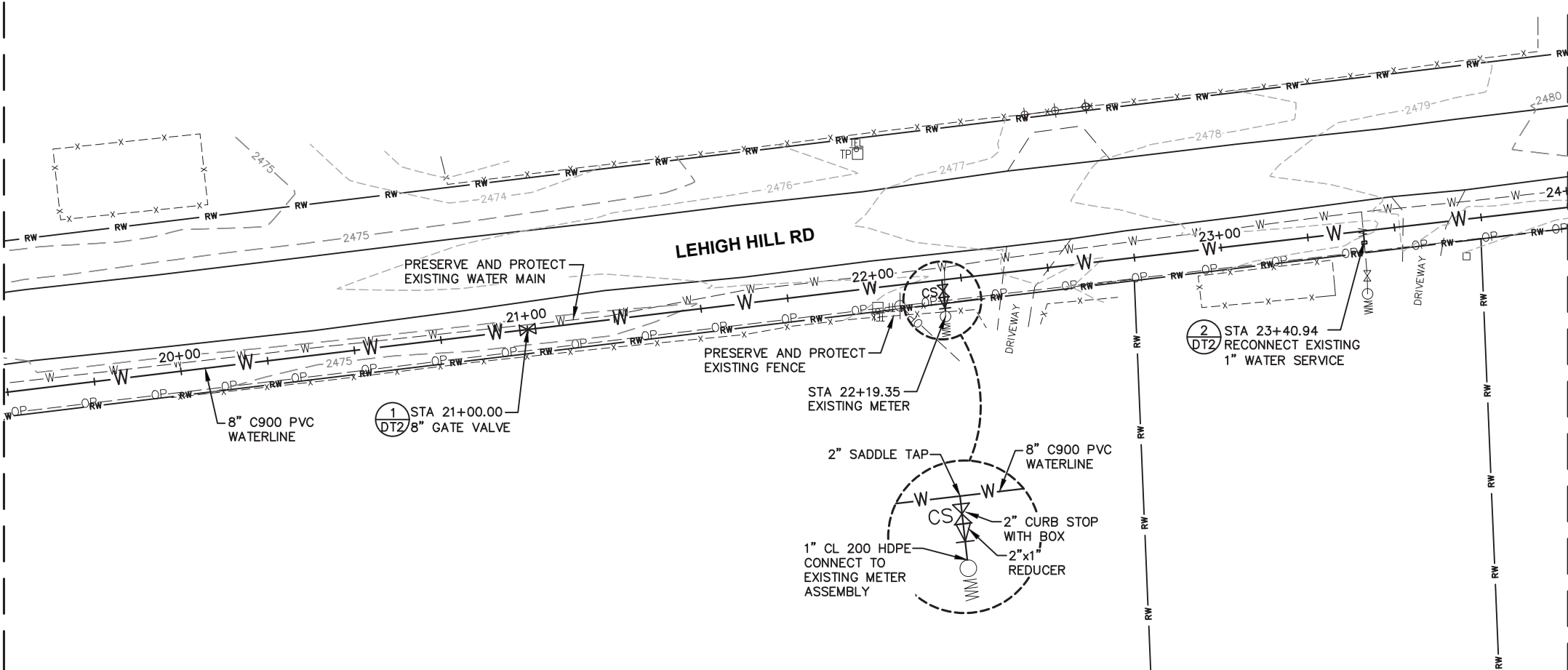
MATCHLINE STA. 19+50.00

**UNDERGROUND SERVICE ALERT**  
**ONE-CALL NUMBER**  
**811**  
 CALL TWO BUSINESS DAYS BEFORE YOU DIG

COPYRIGHT 2022  
 Welch-Comer & Associates, Inc.  
 This document, and ideas and designs incorporated herein, as an instrument of professional service, is the property of Welch-Comer & Associates, Inc., and is not to be used in whole or in part for any other project without the written authorization of Welch-Comer & Associates, Inc.



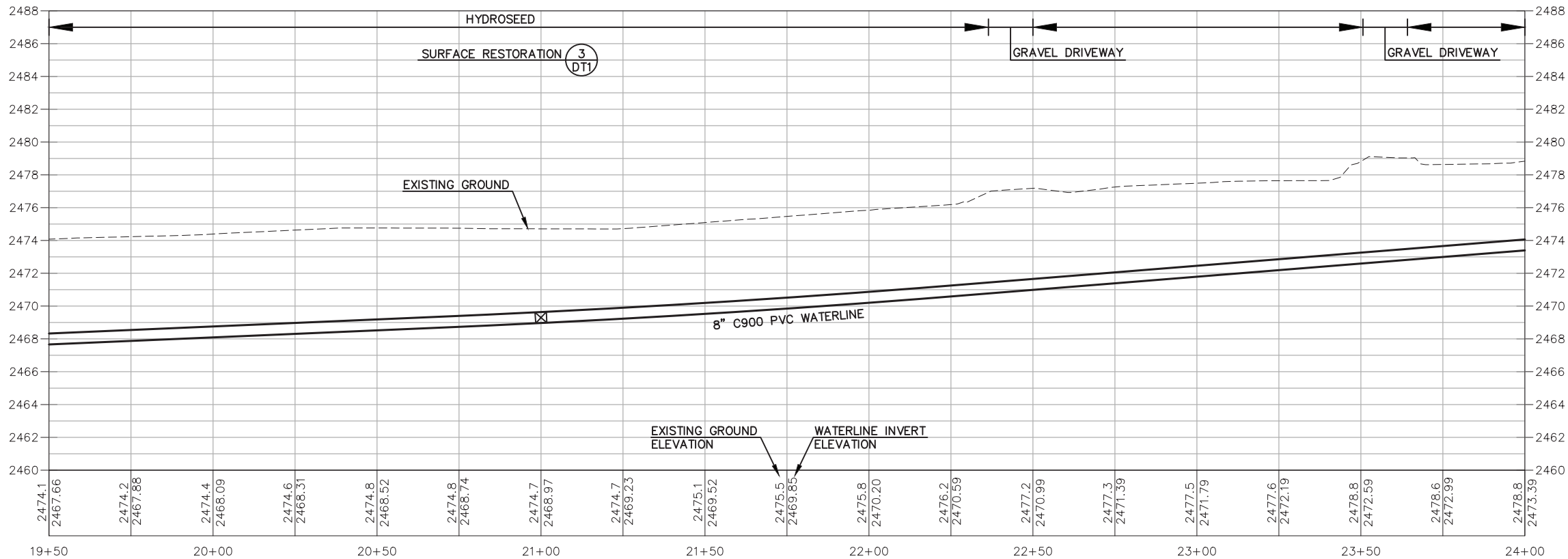
04/14/22



**WELCH-COMER ENGINEERS & SURVEYORS**  
 www.welchcomer.com  
 330 E. Lakeside Ave, Suite 101  
 Coeur d'Alene, ID 83814

208-664-9382  
 (toll free) 877-815-5672  
 (fax) 208-664-5946

NO. DATE REVISION DESCRIPTION BY



PEND OREILLE COUNTY PUD NO. 1  
**METALINE FALLS - LEHIGH WATERLINE IMPROVEMENTS**  
 BID SCHEDULE 2  
 PLAN AND PROFILE

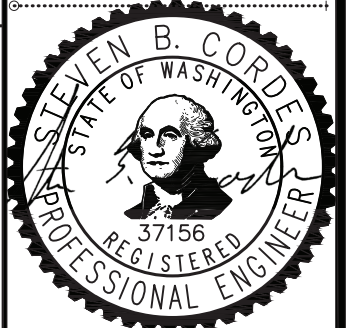
PROJ NO: 53013.020  
 DESIGNED BY: S.B.C.  
 DRAWN BY: J.A.L.  
 CHECKED BY: S.B.C.  
 DWG NAME: 53013.020PL01.DWG  
 DATE: 04-14-22  
 SHEET NO:

**C6**

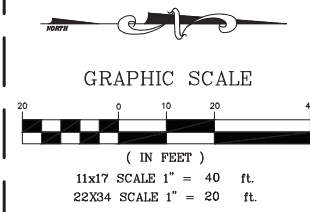
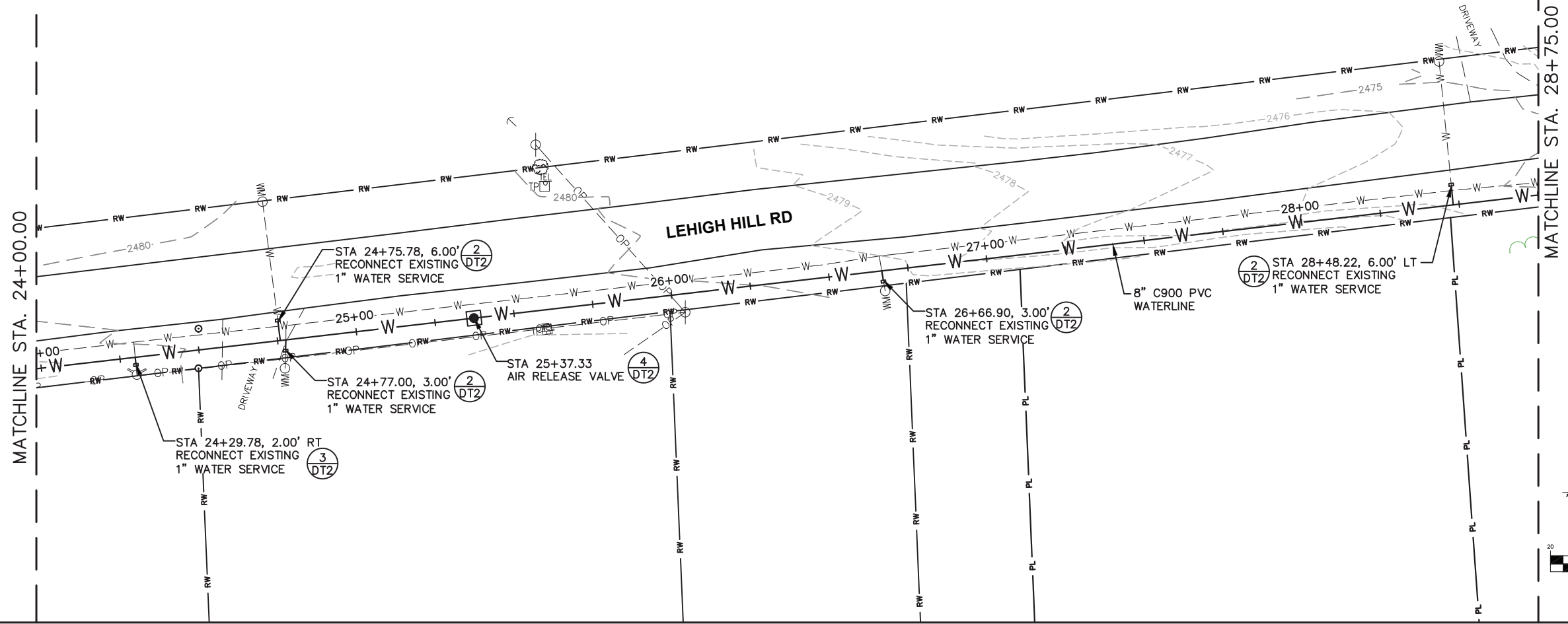
\\sdc\planning\53013.020\Drawings\Drawings\53013.020PL01.dwg - 11:44:20 AM - July 14, 2022

**UNDERGROUND SERVICE ALERT**  
**ONE-CALL NUMBER**  
**811**  
 CALL TWO BUSINESS DAYS  
 BEFORE YOU DIG

COPYRIGHT 2022  
 Welch-Comer & Associates, Inc.  
 This document, and ideas and designs incorporated herein, as an instrument of professional service, is the property of Welch-Comer & Associates, Inc., and is not to be used in whole or in part for any other project without the written authorization of Welch-Comer & Associates, Inc.



04/14/22

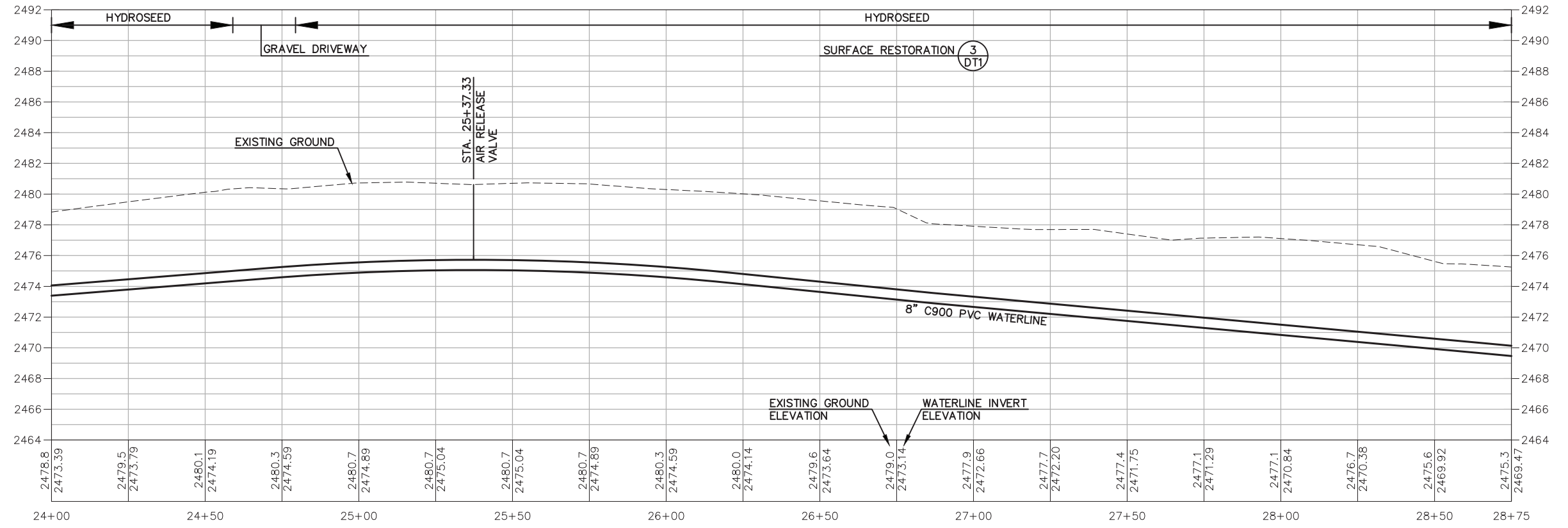


**WELCH-COMER**  
 ENGINEERS & SURVEYORS

www.welchcomer.com  
 330 E. Lakeside Ave, Suite 101  
 Coeur d'Alene, ID 83814

208-664-9382  
 (toll free) 877-815-5672  
 (fax) 208-664-5946

NO.	DATE	REVISION DESCRIPTION	BY

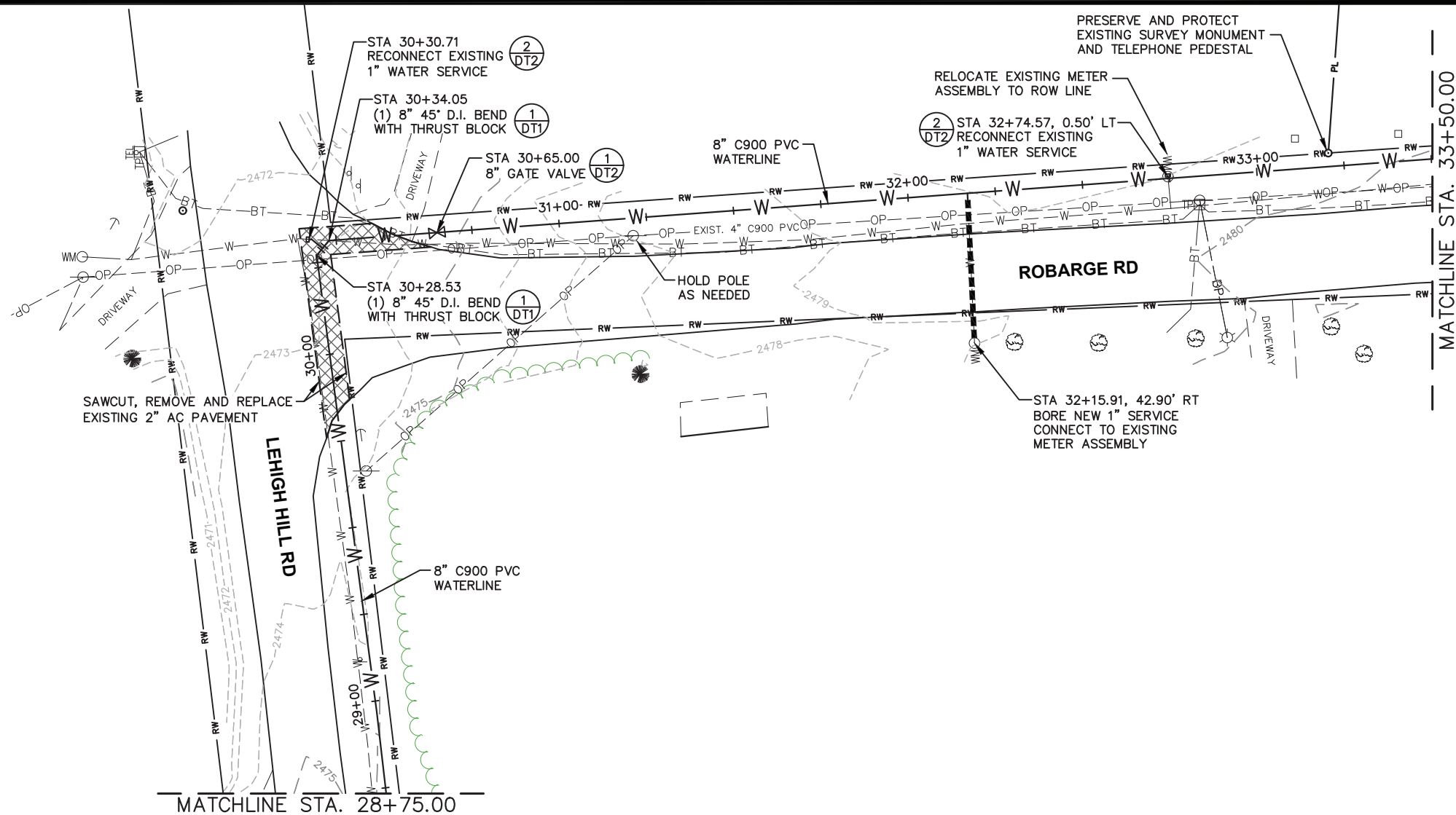


PEND OREILLE COUNTY PUD NO. 1  
**METALINE FALLS - LEHIGH**  
**WATERLINE IMPROVEMENTS**

BID SCHEDULE 2  
 PLAN AND PROFILE

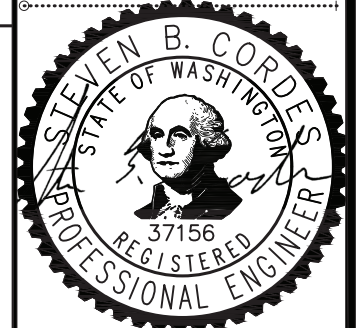
PROJ NO: 53013.020  
 DESIGNED BY: S.B.C.  
 DRAWN BY: J.A.L.  
 CHECKED BY: S.B.C.  
 DWG NAME: 53013.020PL01.DWG  
 DATE: 04-14-22  
 SHEET NO:



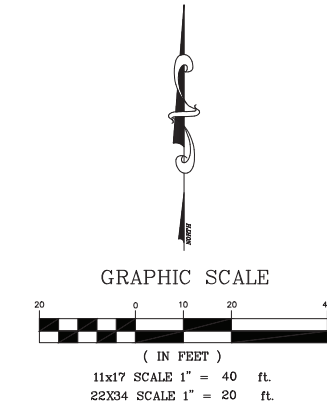


**UNDERGROUND SERVICE ALERT**  
**ONE-CALL NUMBER**  
**811**  
 CALL TWO BUSINESS DAYS BEFORE YOU DIG

COPYRIGHT 2022  
 Welch-Comer & Associates, Inc.  
 This document, and ideas and designs incorporated herein, as an instrument of professional service, is the property of Welch-Comer & Associates, Inc., and is not to be used in whole or in part for any other project without the written authorization of Welch-Comer & Associates, Inc.



04/14/22

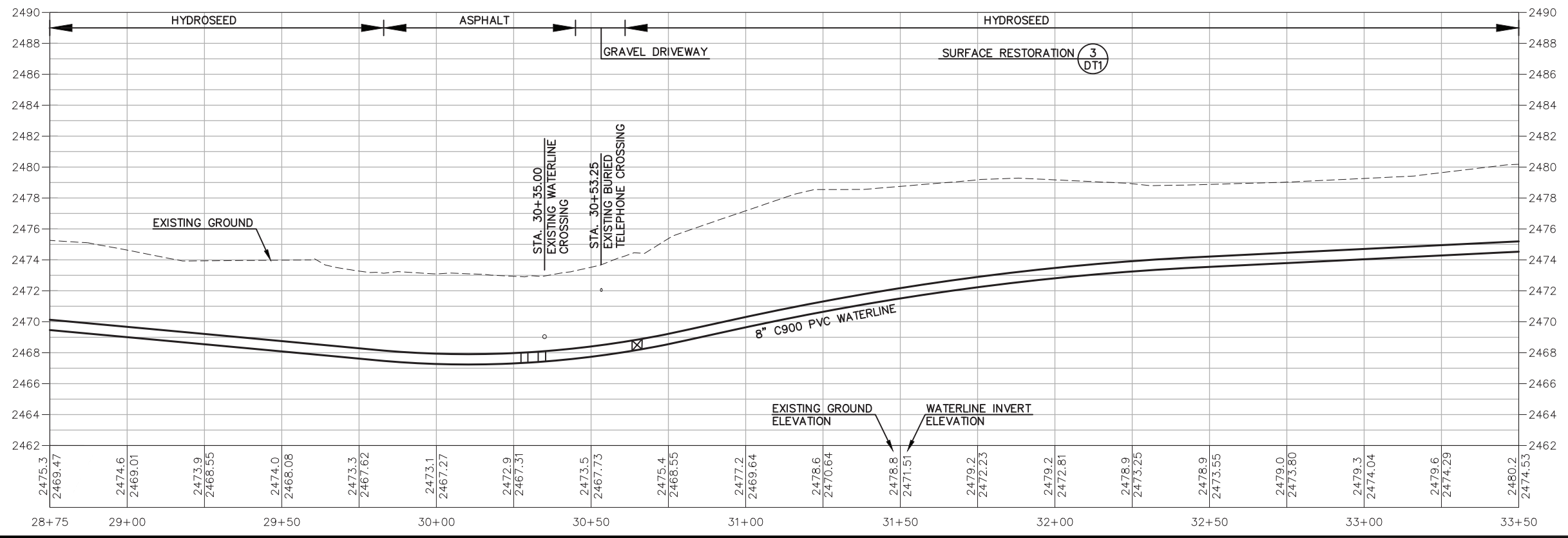


**WELCH-COMER**  
 ENGINEERS | SURVEYORS

www.welchcomer.com  
 330 E. Lakeside Ave, Suite 101  
 Coeur d'Alene, ID 83814

208-664-9382  
 (toll free) 877-815-5672  
 (fax) 208-664-5946

NO.	DATE	REVISION DESCRIPTION	BY

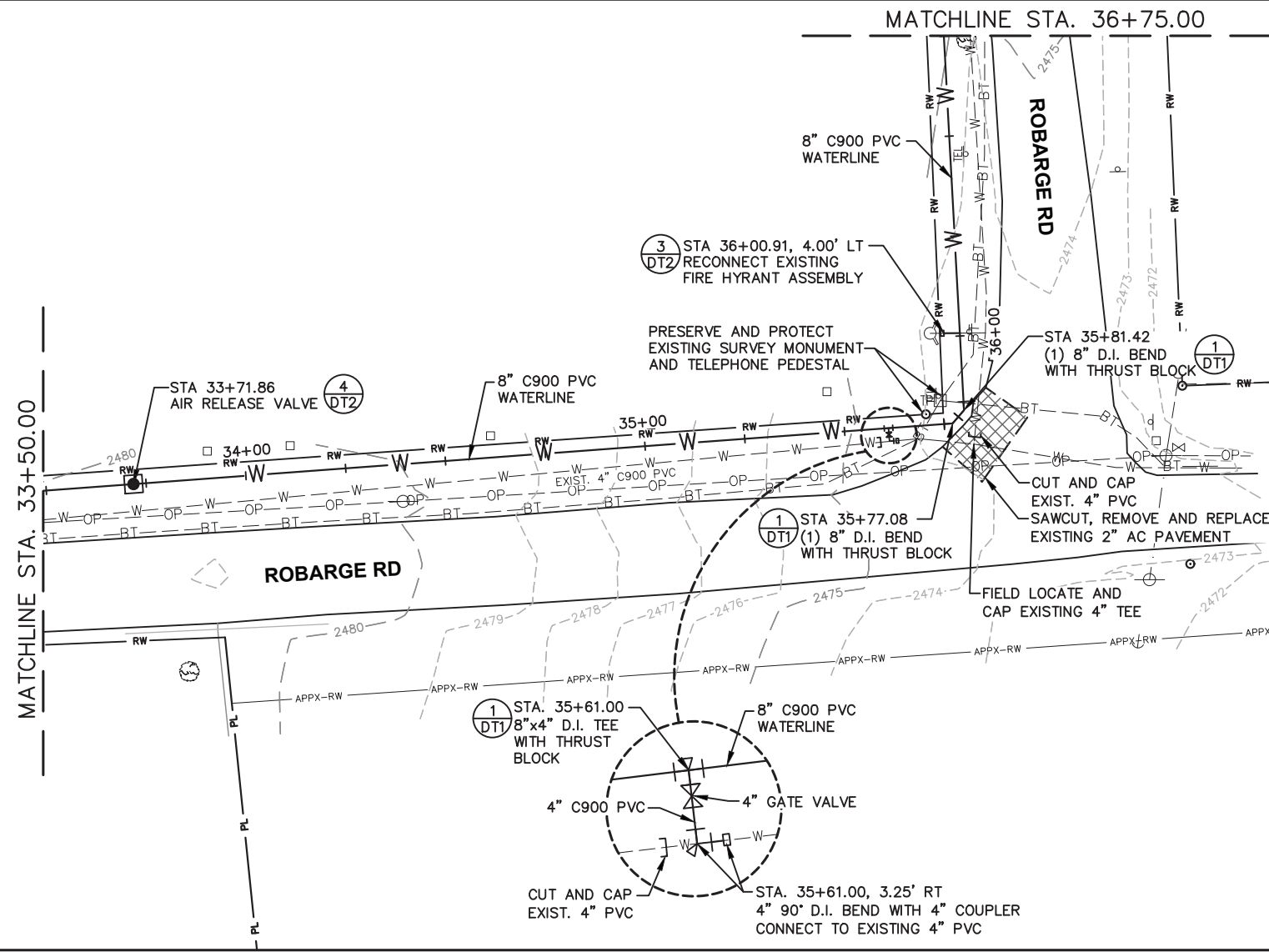


PEND OREILLE COUNTY PUD NO. 1  
**METALINE FALLS - LEHIGH**  
**WATERLINE IMPROVEMENTS**

BID SCHEDULE 2  
 PLAN AND PROFILE

PROJ NO: 53013.020  
 DESIGNED BY: S.B.C.  
 DRAWN BY: J.A.L.  
 CHECKED BY: S.B.C.  
 DWG NAME: 53013.020PL01.DWG  
 DATE: 04-14-22  
 SHEET NO:

**C8**

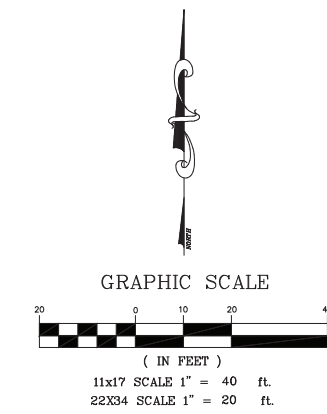


**UNDERGROUND SERVICE ALERT**  
**ONE-CALL NUMBER**  
**811**  
 CALL TWO BUSINESS DAYS  
 BEFORE YOU DIG

COPYRIGHT 2022  
 Welch-Comer & Associates, Inc.  
 This document, and ideas and designs incorporated herein, as an instrument of professional service, is the property of Welch-Comer & Associates, Inc., and is not to be used in whole or in part for any other project without the written authorization of Welch-Comer & Associates, Inc.

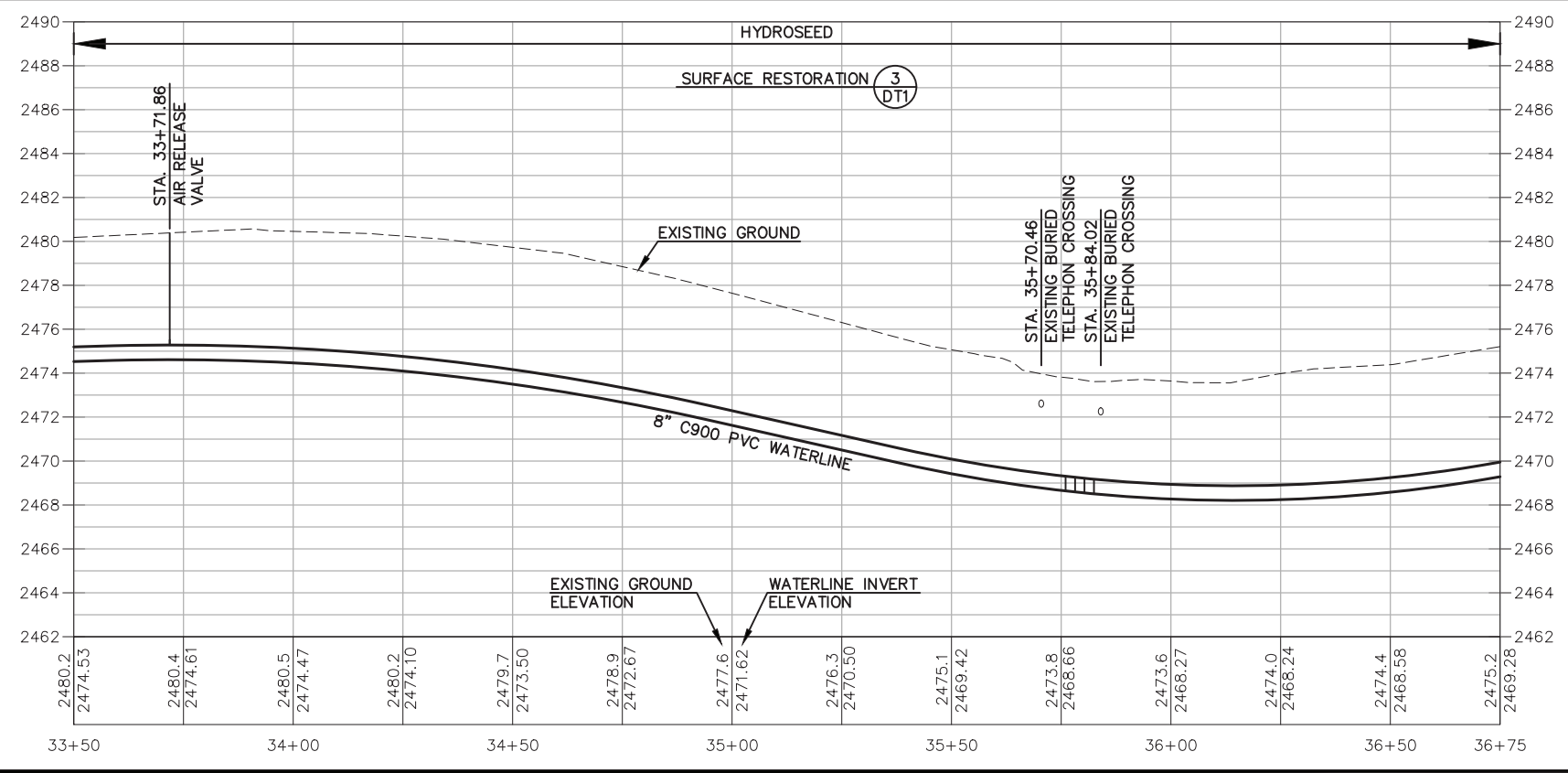


04/14/22



**WELCH-COMER**  
 ENGINEERS & SURVEYORS  
 www.welchcomer.com  
 330 E. Lakeside Ave, Suite 101  
 Coeur d'Alene, ID 83814  
 208-664-9382  
 (toll free) 877-815-5672  
 (fax) 208-664-5946

NO.	DATE	REVISION DESCRIPTION	BY



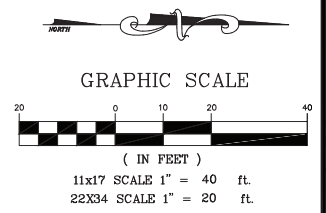
PEND OREILLE COUNTY PUD NO. 1  
**METALINE FALLS - LEHIGH**  
**WATERLINE IMPROVEMENTS**  
 BID SCHEDULE 2  
 PLAN AND PROFILE

PROJ NO: 53013.020  
 DESIGNED BY: S.B.C.  
 DRAWN BY: J.A.L.  
 CHECKED BY: S.B.C.  
 DWG NAME: 53013.020PL01.DWG  
 DATE: 04-14-22  
 SHEET NO:

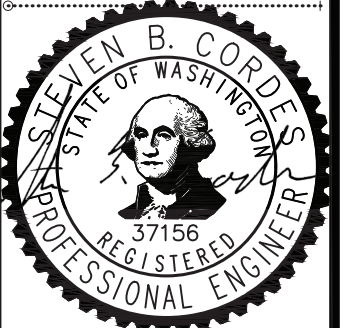


A:\C\1020\_Design\53013.020\Drawings\53013.020PL01.dwg - 11:41:20 AM - 10-16-22

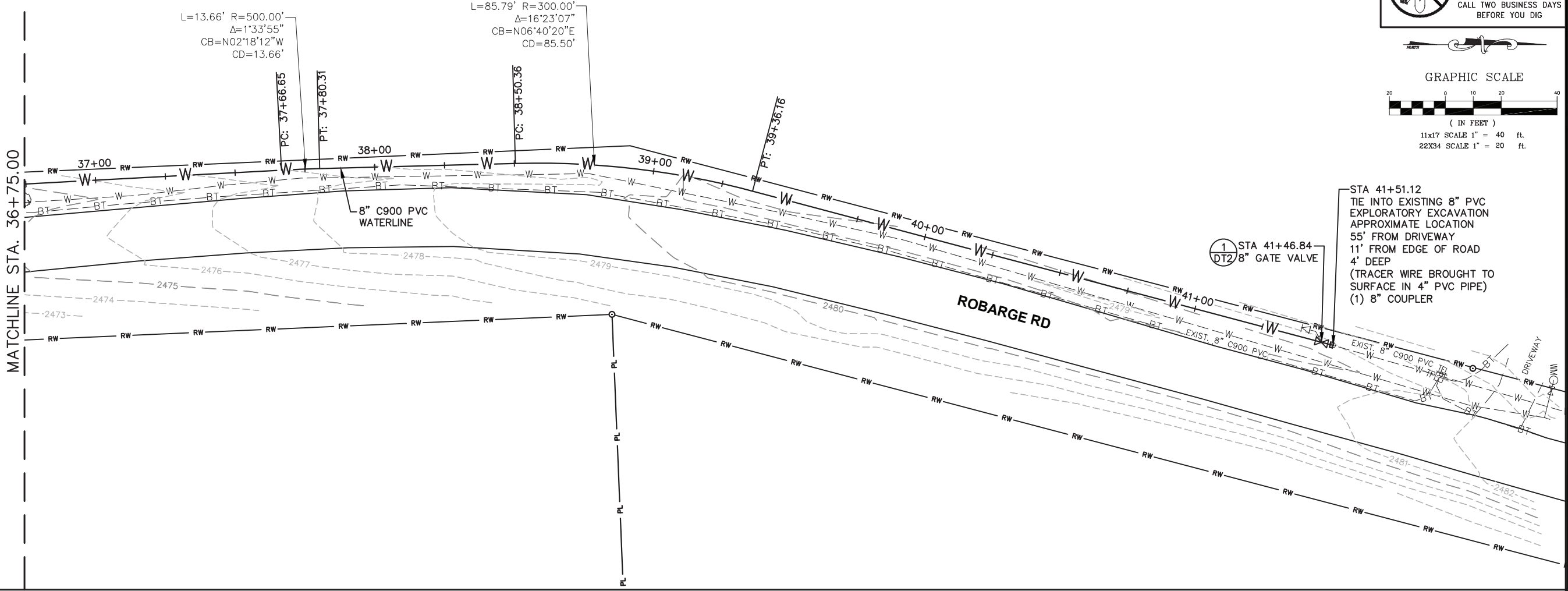
**UNDERGROUND SERVICE ALERT**  
**ONE-CALL NUMBER**  
**811**  
 CALL TWO BUSINESS DAYS  
 BEFORE YOU DIG



COPYRIGHT 2022  
 Welch-Comer & Associates, Inc.  
 This document, and ideas and designs incorporated herein, as an instrument of professional service, is the property of Welch-Comer & Associates, Inc., and is not to be used in whole or in part for any other project without the written authorization of Welch-Comer & Associates, Inc.



04/14/22



STA 41+51.12  
 TIE INTO EXISTING 8" PVC  
 EXPLORATORY EXCAVATION  
 APPROXIMATE LOCATION  
 55' FROM DRIVEWAY  
 11' FROM EDGE OF ROAD  
 4' DEEP  
 (TRACER WIRE BROUGHT TO  
 SURFACE IN 4" PVC PIPE)  
 (1) 8" COUPLER

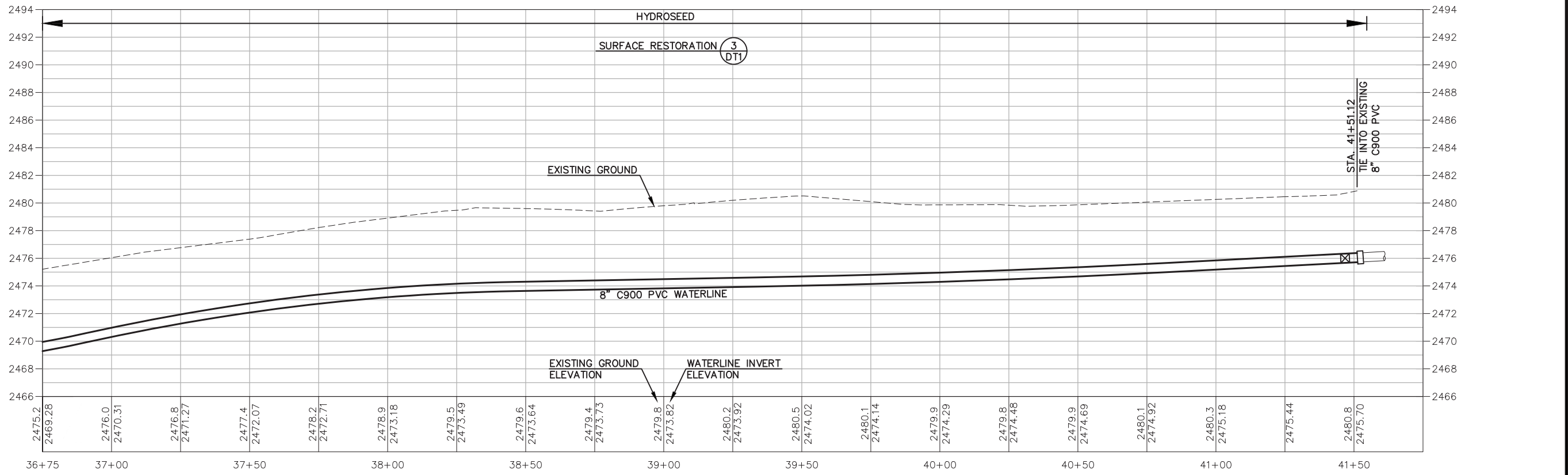
1 STA 41+46.84  
 DT2 8" GATE VALVE

**WELCH-COMER**  
 ENGINEERS & SURVEYORS

www.welchcomer.com  
 330 E. Lakeside Ave, Suite 101  
 Coeur d'Alene, ID 83814

208-664-9382  
 (toll free) 877-815-5672  
 (fax) 208-664-5946

NO.	DATE	REVISION DESCRIPTION	BY



PEND OREILLE COUNTY PUD NO. 1  
**METALINE FALLS - LEHIGH**  
**WATERLINE IMPROVEMENTS**

BID SCHEDULE 2  
 PLAN AND PROFILE

PROJ NO: 53013.020  
 DESIGNED BY: S.B.C.  
 DRAWN BY: J.A.L.  
 CHECKED BY: S.B.C.  
 DWG NAME: 53013.020PL01.DWG  
 DATE: 04-14-22  
 SHEET NO:

**C10**